



士古来大道通往市中心
Jalan Skudai to JB City Centre



1房1卫 1 rooms
Construction Area 建筑面积 Approx. 约 407 - 510 37.80 - 47.38 sq.ft. 平方米 sq.meter, 平方米
2房1卫 2 rooms (无储藏室)
Construction Area 建筑面积 Approx. 约 699 - 739 64.94 - 68.66 sq.ft. 平方米 sq.meter, 平方米
2房1卫 2 rooms (含储藏室)
Construction Area 建筑面积 Approx. 约 705 - 722 65.50 - 67.08 sq.ft. 平方米 sq.meter, 平方米
2房2卫 2 rooms
Construction Area 建筑面积 Approx. 约 794 - 816 73.76 - 75.81 sq.ft. 平方米 sq.meter, 平方米
2房2卫 2 rooms
Construction Area 建筑面积 Approx. 约 875 - 882 81.29 - 81.94 sq.ft. 平方米 sq.meter, 平方米
3房3卫 3 rooms
Construction Area 建筑面积 Approx. 约 1,186 - 1,225 110.18 - 113.81 sq.ft. 平方米 sq.meter, 平方米
3房3卫 3 rooms
Construction Area 建筑面积 Approx. 约 1,216 - 1,242 112.97 - 115.39 sq.ft. 平方米 sq.meter, 平方米
3房2卫 3 rooms
Construction Area 建筑面积 Approx. 约 1,264 - 1,311 117.43 - 121.80 sq.ft. 平方米 sq.meter, 平方米
3+1房4卫 3+1 rooms
Construction Area 建筑面积 Approx. 约 1,425 - 1,488 132.39 - 138.24 sq.ft. 平方米 sq.meter, 平方米
3+1房4卫 3+1 rooms
Construction Area 建筑面积 Approx. 约 1,474 - 1,523 136.94 - 141.49 sq.ft. 平方米 sq.meter, 平方米

- 1. Main Entrance 项目入口
- 2. Phoenix Clubhouse 凤凰会所
- 3. Infinity Pool 海景无边际泳池
- 4. Children's Playground 儿童游乐园
- 5. Private Beach - Phoenix Beach 凤凰沙滩
- 6. Exclusive Marina - Marina 游艇码头
- 7. Danga Avenue 1 1号商业街
- 8. Danga Avenue 2 2号商业街
- 9. Danga Avenue 3 (Seaview) 3号商业街 (海景)
- 10. Shopping Mall 购物中心
- 11. Badminton Court 羽球场

双溪布洛湿地自然保护区 (新加坡)
Sungei Buloh Wetland Reserve
Singapore

All image are artist's impression only. The developer reserves the right to modify any parts of the building prior to completion as directed or approved by relevant authorities. All plans, layouts, information and specifications are subject to change and cannot form part of an offer of contract presentation.
免责声明: 以上户型图所示仅供参考, 交房尺寸以合同约定为准, 相同户型图链接、楼层、单元等差别、楼层开、阳台结构、面积等可能不同, 本资料所有图则及链接均以政府最后批复及双方买卖合同为准。



J540-B1

LEVEL 8,9,10,11,12,13,14,15,16,17,
18,19,20,21,22,23,24,25,26,
27,28,29

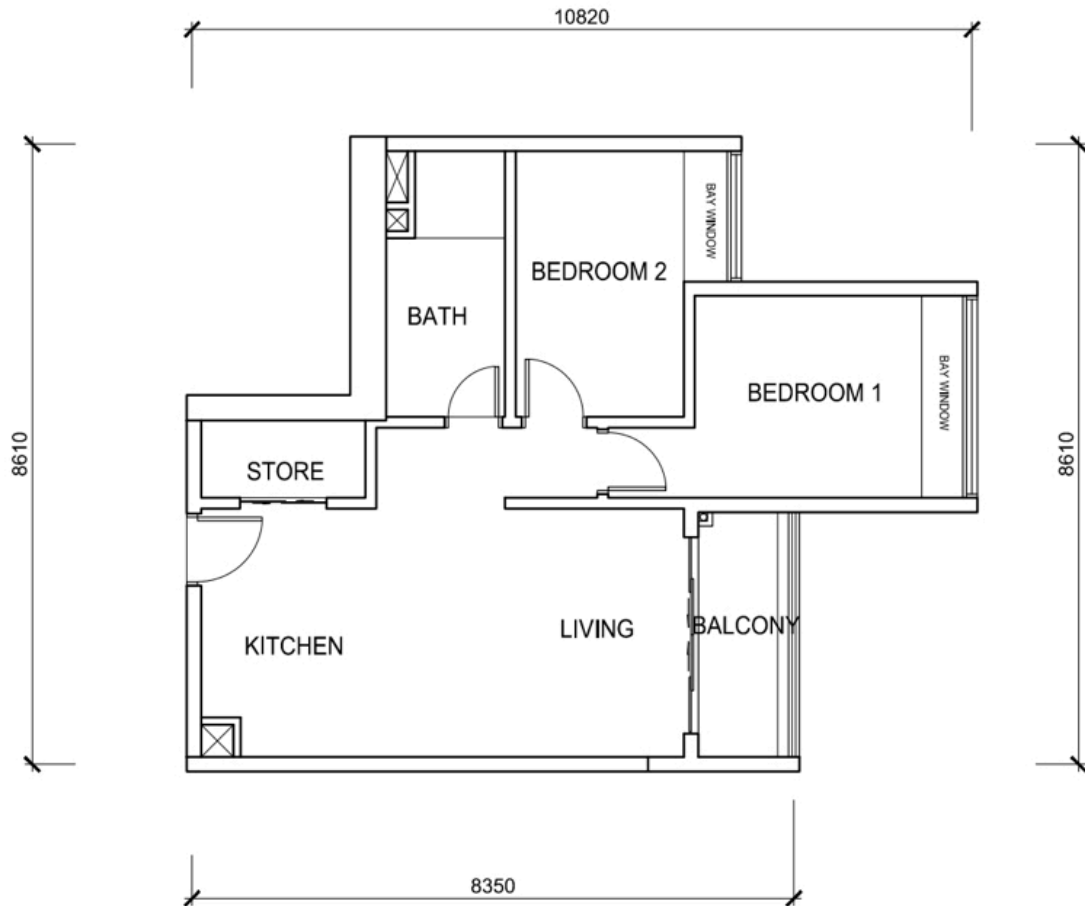
Mawbey & Co

AKIPRAKTIS

ARCHITECT
122, JALAN IPOH, 51200, KUALA LUMPUR
TEL: 03-4042 5964, 4042 9762.

BLOCK 1A / 1B / 1C / 1D / 1E
- TYPE B1

* ALL DRAWINGS ARE SUBJECTED TO CHANGES AS DIRECTED BY THE APPROPRIATE AUTHORITY OR THE DEVELOPER'S ARCHITECT.



J540-B

LEVEL 8,9,10,11,12,13,14,15,16,17,
18,19,20,21,22,23,24,25,26
27,28,29,30,31,32,33

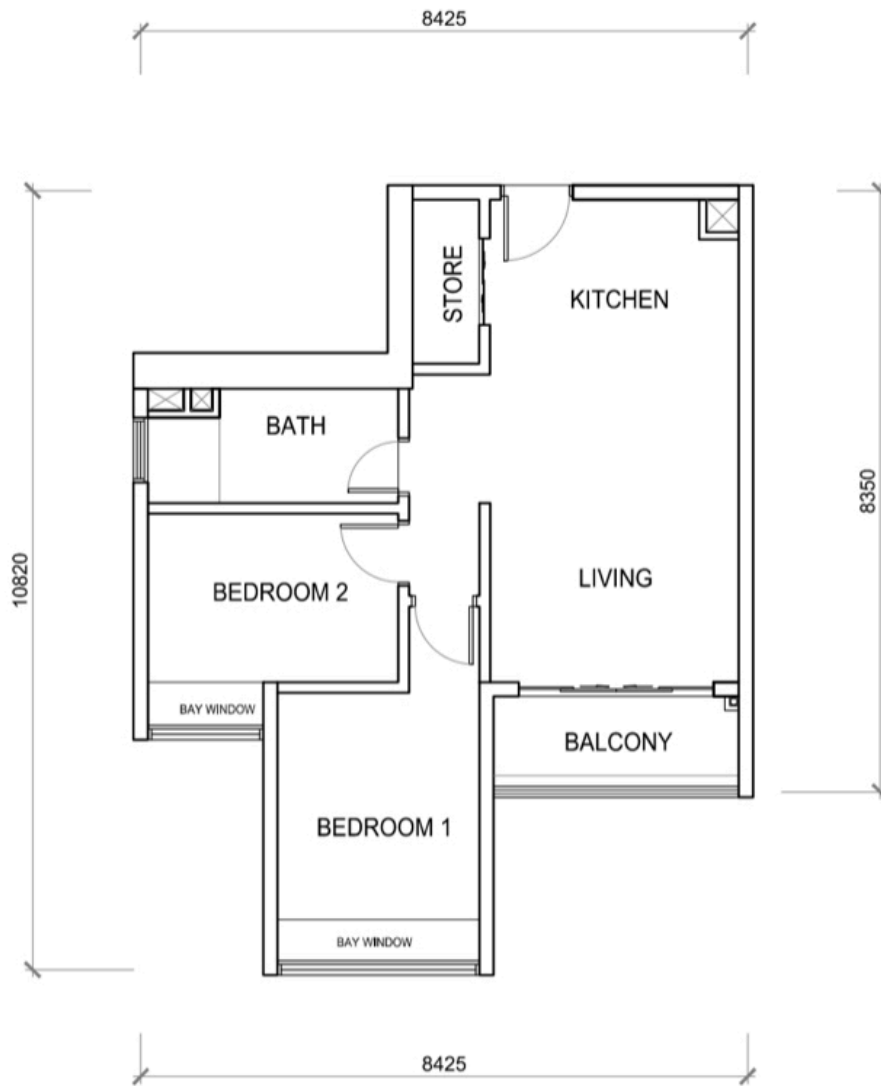
Handwritten signature

AKIPRAKTIS

ARCHITECT
122, JALAN IPOH, 51200, KUALA LUMPUR
TEL: 03-4042 5964, 4042 9762.

BLOCK 1A / 1B / 1C / 1D / 1E
- TYPE B

* ALL DRAWINGS ARE SUBJECTED TO CHANGES AS
DIRECTED BY THE APPROPRIATE AUTHORITY OR
THE DEVELOPER'S ARCHITECT.



J540-B1 (M)

LEVEL 8,9,10,11,12,13,14,15,16,17,
18,19,20,21,22,23,24,25,26,
27,28,29

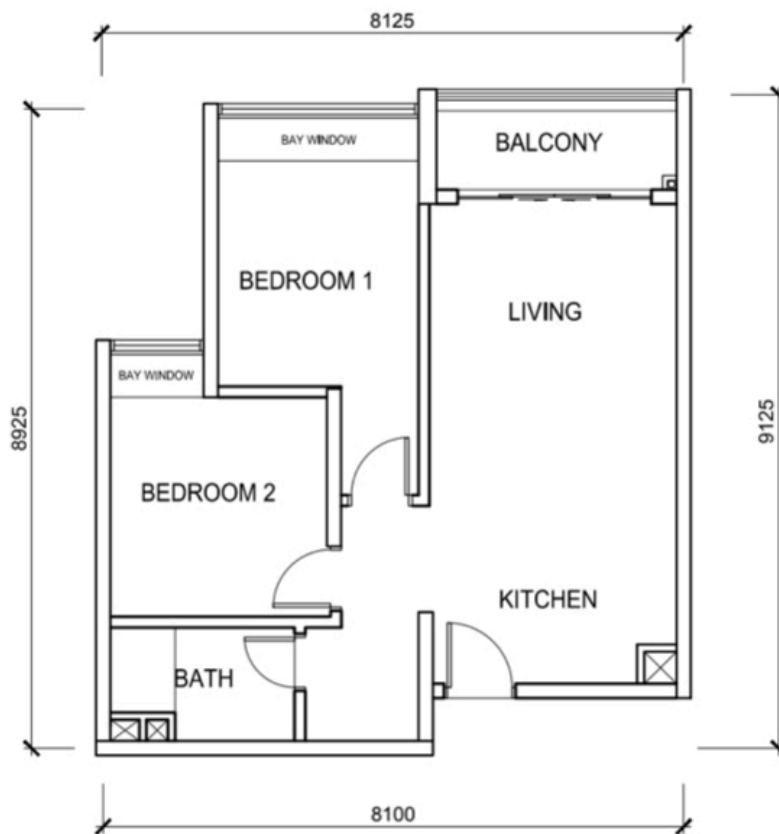
AKIPRAKTIS

AKIPRAKTIS

ARCHITECT
122, JALAN IPOH, 51200, KUALA LUMPUR
TEL: 03-4042 5964, 4042 9762.

BLOCK 1A / 1B / 1C / 1D / 1E
- TYPE B1 (MIRROR)

* ALL DRAWINGS ARE SUBJECTED TO CHANGES AS
DIRECTED BY THE APPROPRIATE AUTHORITY OR
THE DEVELOPER'S ARCHITECT.



J540-A

LEVEL 8,9,10,11,12,13,14,15,16,17,
18,19,20,21,22,23,24,25,26,
27,28,29,30,31,32,33

Mawlayong

AKIPRAKTIS

ARCHITECT

122, JALAN IPOH, 51200, KUALA LUMPUR
TEL: 03-4042 5964, 4042 9762.

BLOCK 1A / 1B / 1C / 1D / 1E
- TYPE A

* ALL DRAWINGS ARE SUBJECTED TO CHANGES AS
DIRECTED BY THE APPROPRIATE AUTHORITY OR
THE DEVELOPER'S ARCHITECT.



J540-A (M)

LEVEL 8,9,10,11,12,13,14,15,16,17,
18,19,20,21,22,23,24,25,26,
27,28,29,30,31,32,33

Mawlayong

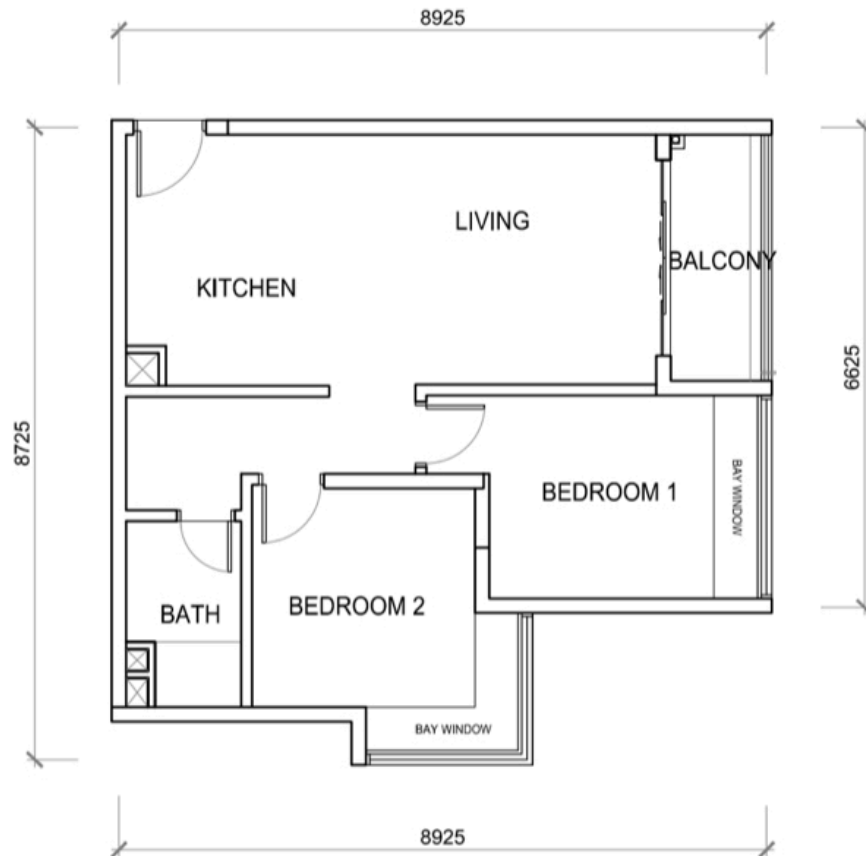
AKIPRAKTIS

ARCHITECT

122, JALAN IPOH, 51200, KUALA LUMPUR
TEL: 03-4042 5964, 4042 9762.

BLOCK 1A / 1B / 1C / 1D / 1E
- TYPE A (MIRROR)

* ALL DRAWINGS ARE SUBJECTED TO CHANGES AS
DIRECTED BY THE APPROPRIATE AUTHORITY OR
THE DEVELOPER'S ARCHITECT.



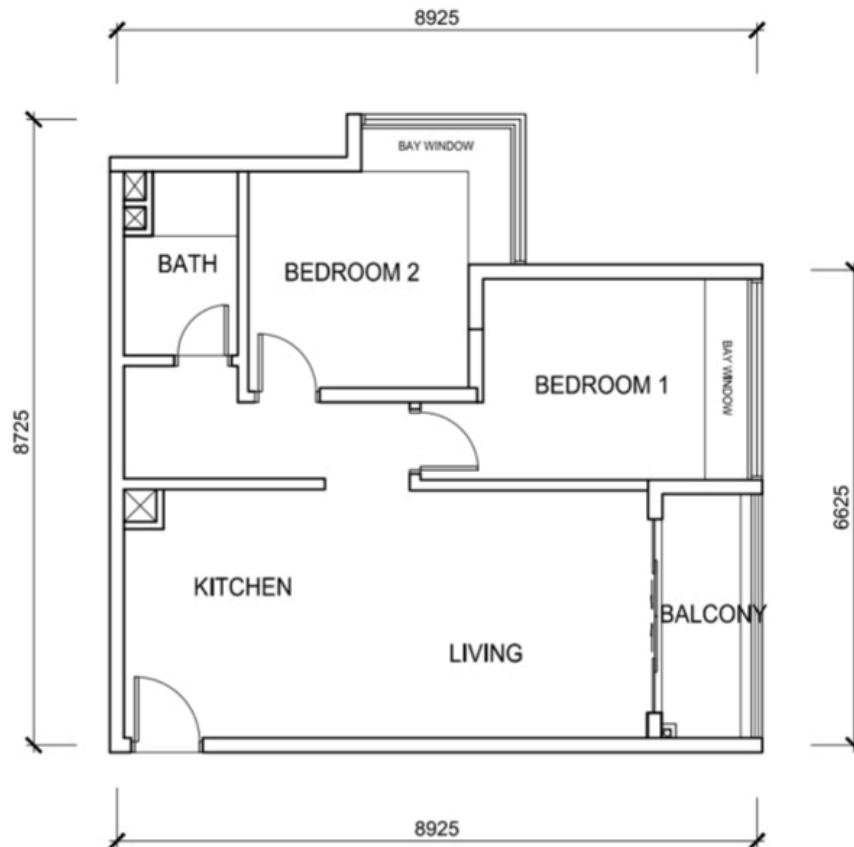
J540-A1 (M)

LEVEL 8,9,10,11,12,13,14,15,16,17,
18,19,20,21,22,23,24,25

Mawlayang
AKIPRAKTIS
ARCHITECT
122, JALAN IPOH, 51200, KUALA LUMPUR
TEL: 03-4042 5964, 4042 9762.

BLOCK 1A / 1B / 1C / 1D / 1E
- TYPE A1 (MIRROR)

* ALL DRAWINGS ARE SUBJECTED TO CHANGES AS DIRECTED BY THE APPROPRIATE AUTHORITY OR THE DEVELOPER'S ARCHITECT.



J540-A1

LEVEL 8,9,10,11,12,13,14,15,16,17,
18,19,20,21,22,23,24,25

Mawlayong

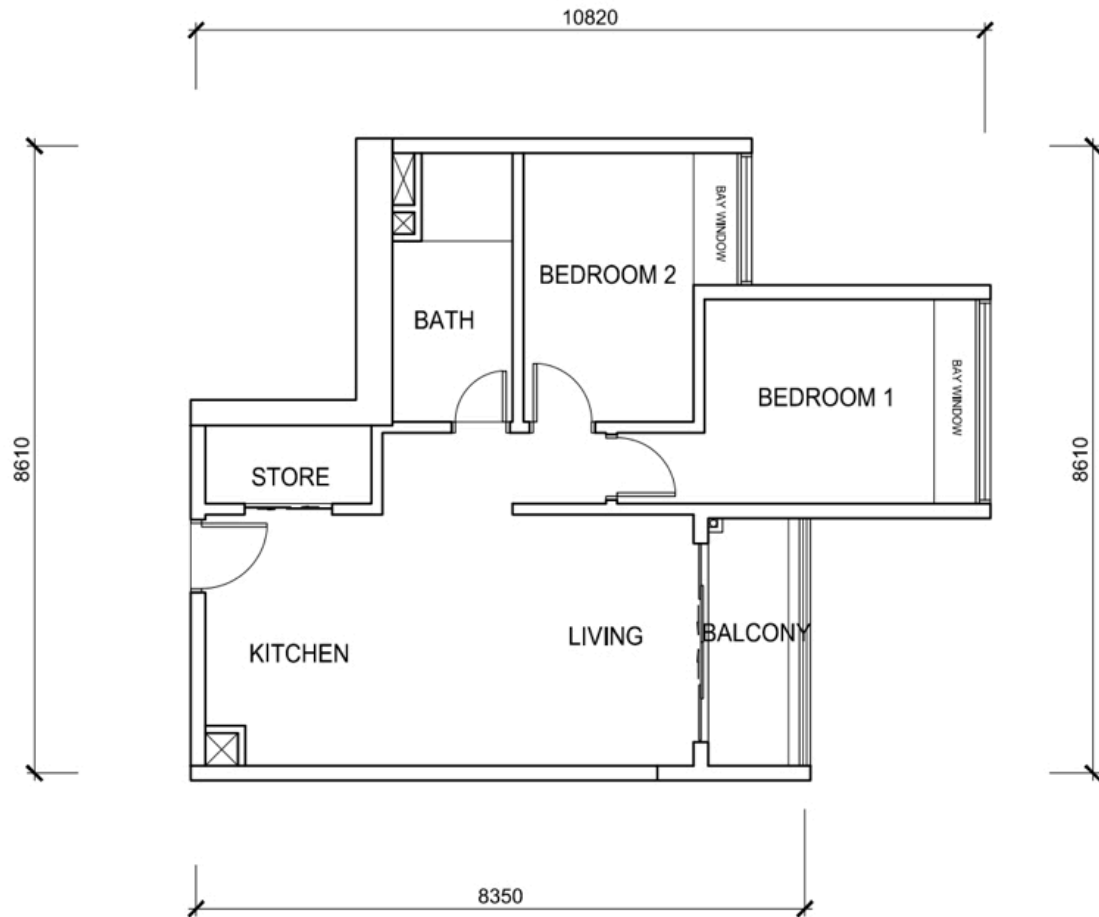
AKIPRAKTIS

ARCHITECT

122, JALAN IPOH, 51200, KUALA LUMPUR
TEL: 03-4042 5964, 4042 9762.

BLOCK 1A / 1B / 1C / 1D / 1E
- TYPE A1

* ALL DRAWINGS ARE SUBJECTED TO CHANGES AS
DIRECTED BY THE APPROPRIATE AUTHORITY OR
THE DEVELOPER'S ARCHITECT.



J540-B

LEVEL 8,9,10,11,12,13,14,15,16,17,
18,19,20,21,22,23,24,25,26
27,28,29,30,31,32,33

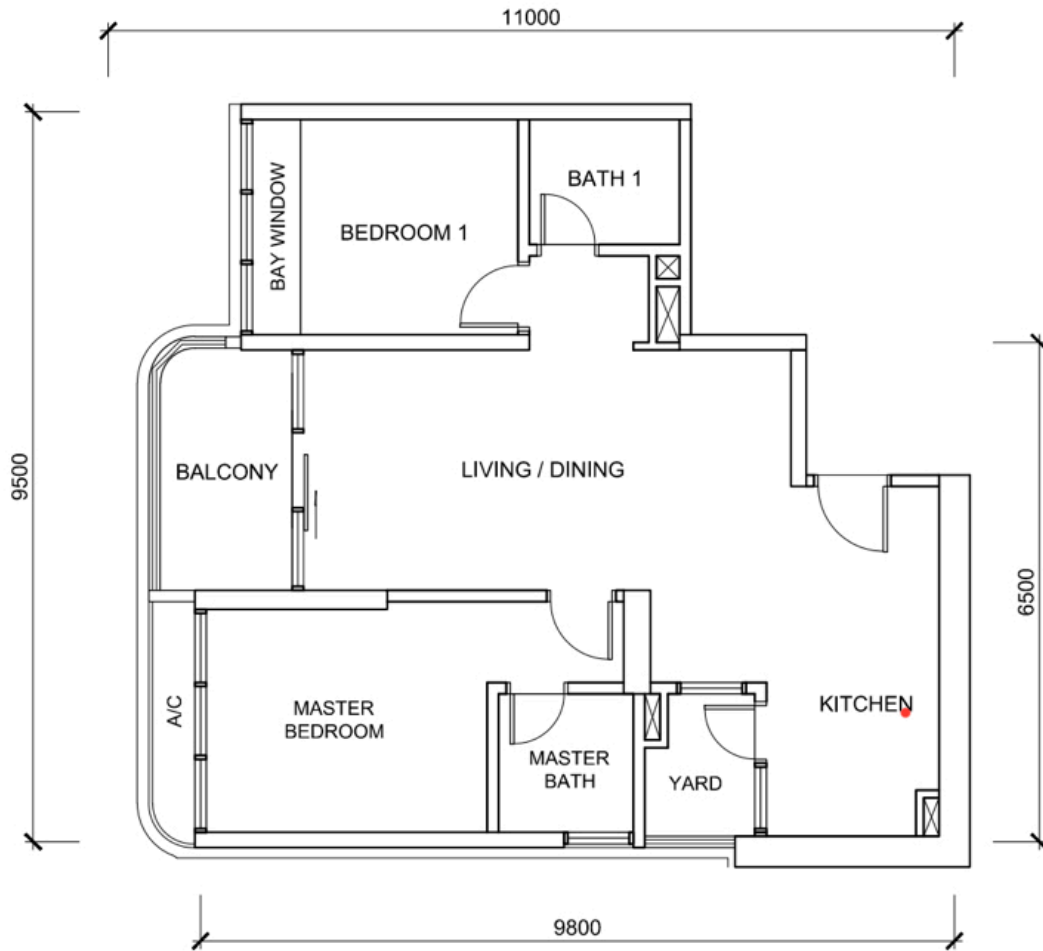
Handwritten signature

AKIPRAKTIS

ARCHITECT
122, JALAN IPOH, 51200, KUALA LUMPUR
TEL: 03-4042 5964, 4042 9762.

BLOCK 1A / 1B / 1C / 1D / 1E
- TYPE B

* ALL DRAWINGS ARE SUBJECTED TO CHANGES AS
DIRECTED BY THE APPROPRIATE AUTHORITY OR
THE DEVELOPER'S ARCHITECT.



J533-C1

LEVEL 13,14,15,16,17,18,25,26,27,
28,29,30,37,38,39,40,41,42,
48

Handwritten signature

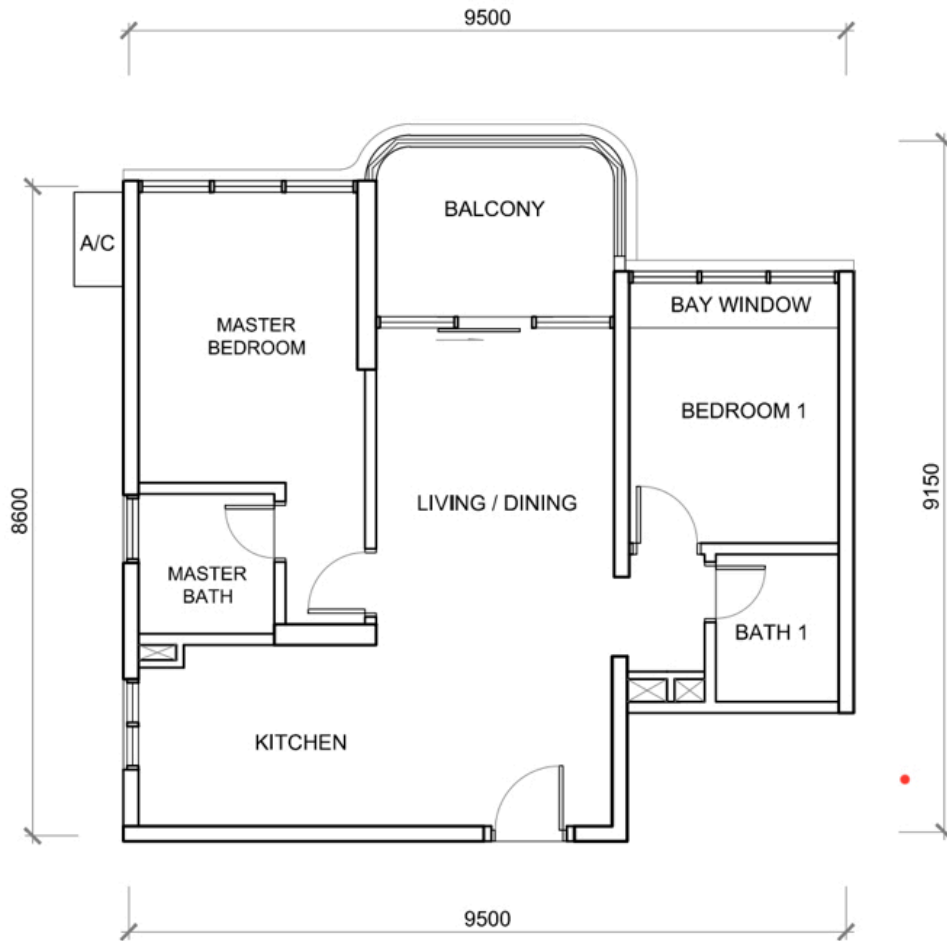
AKIPRAKTIS

ARCHITECT

122, JALAN IPOH, 51200, KUALA LUMPUR
TEL: 03-4042 5964, 4042 9762.

BLOCK 11A / 11B
- TYPE J533 - C1

* ALL DRAWINGS ARE SUBJECTED TO CHANGES AS
DIRECTED BY THE APPROPRIATE AUTHORITY OR
THE DEVELOPER'S ARCHITECT.



J533-B

LEVEL 9,10,11,12,13,14,15,16,17,
18,19,20,21,22,23,24,25,26,
27,28,29,30,31,32,33,34,35,
36,37,38,39,40,41,42,43,44,
45,46,47,48

Mawlay Wong

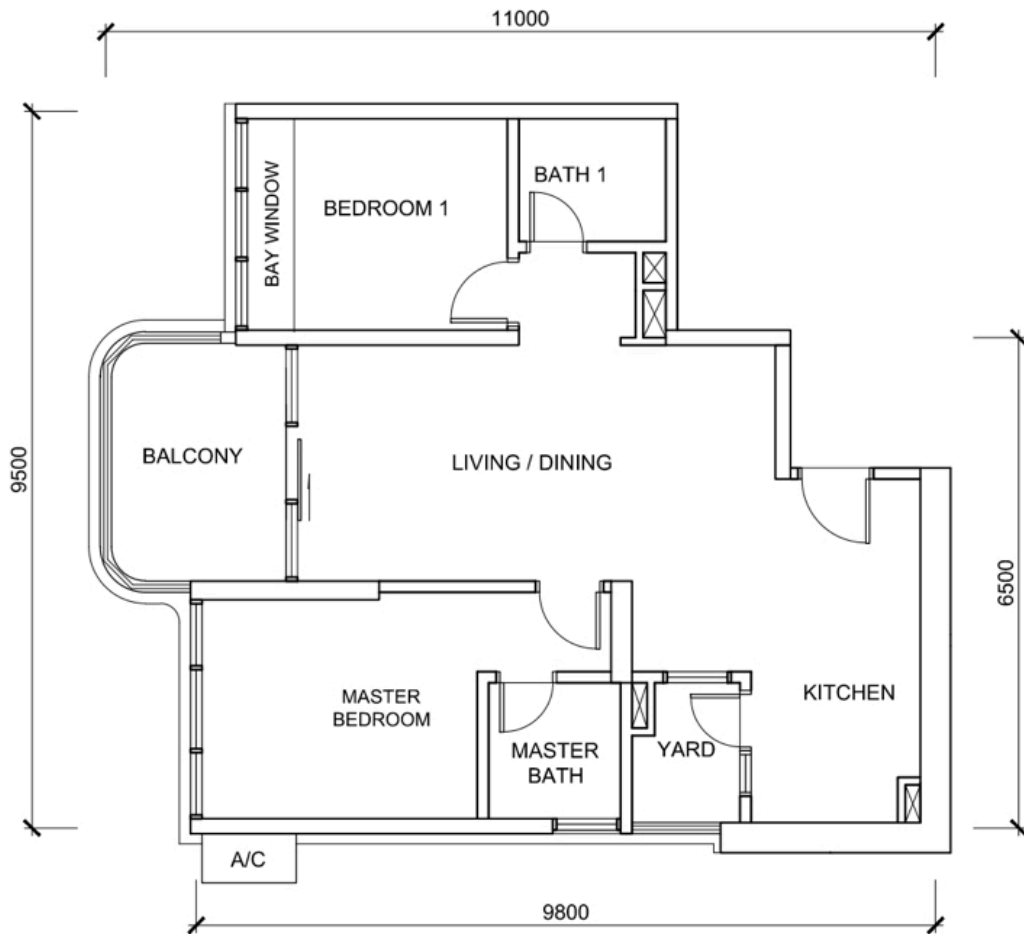
AKIPRAKTIS

ARCHITECT

122, JALAN IPOH, 51200, KUALA LUMPUR
TEL: 03-4042 5964, 4042 9762.

BLOCK 11A / 11B
- TYPE B

* ALL DRAWINGS ARE SUBJECTED TO CHANGES AS
DIRECTED BY THE APPROPRIATE AUTHORITY OR
THE DEVELOPER'S ARCHITECT.



J533-C

LEVEL 9,10,11,12,19,20,21,22,23,
24,31,32,33,34,35,36,43,44,
45,46,47

Mawlaty wong

AKIPRAKTIS

ARCHITECT

122, JALAN IPOH, 51200, KUALA LUMPUR
TEL: 03-4042 5964, 4042 9762.

BLOCK 11A / 11B
- TYPE J533 - C

* ALL DRAWINGS ARE SUBJECTED TO CHANGES AS
DIRECTED BY THE APPROPRIATE AUTHORITY OR
THE DEVELOPER'S ARCHITECT.



J535-B1

LEVEL 12,13,14,15,16,17,24,25,26,
27,28,29,36,37,38,39,40,41,
48

Mawlayang

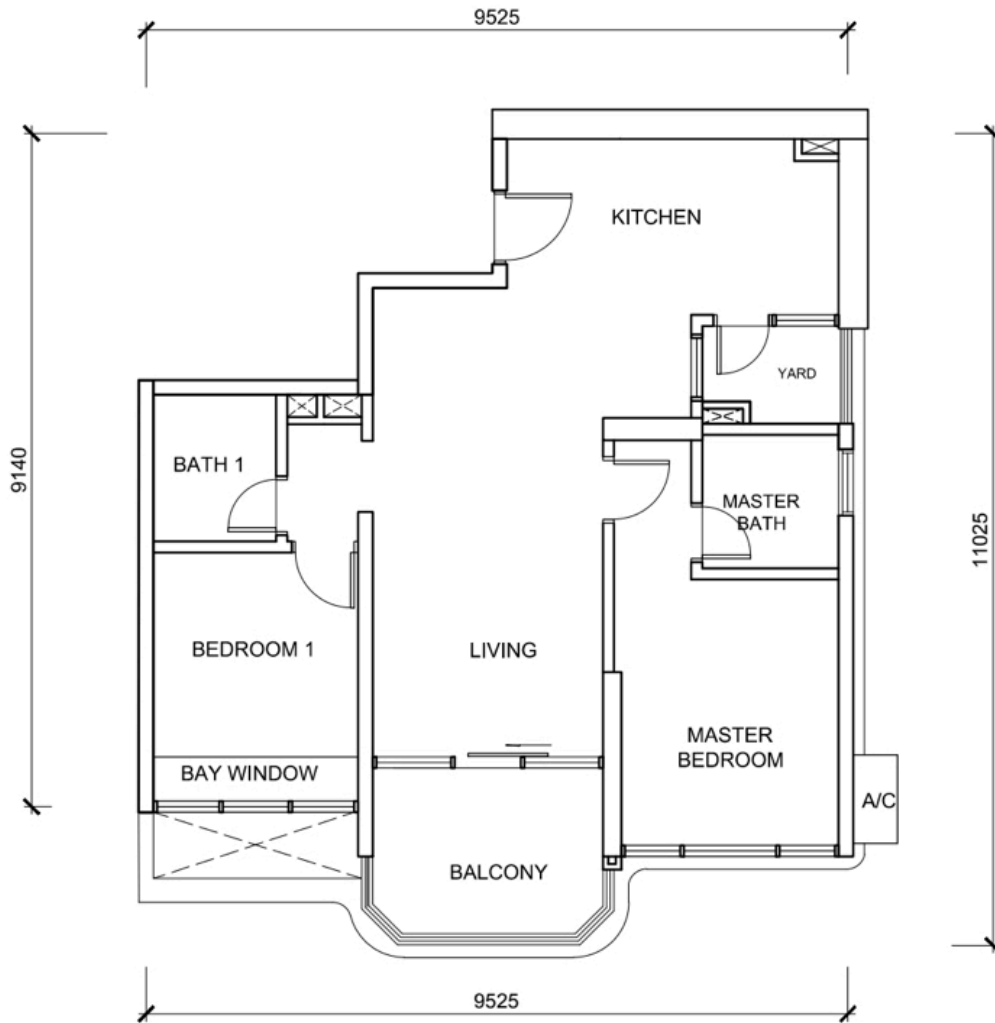
AKIPRAKTIS

ARCHITECT

122, JALAN IPOH, 51200, KUALA LUMPUR
TEL: 03-4042 5964, 4042 9762.

BLOCK 8A / 8B
- TYPE B1

* ALL DRAWINGS ARE SUBJECTED TO CHANGES AS
DIRECTED BY THE APPROPRIATE AUTHORITY OR
THE DEVELOPER'S ARCHITECT.



J535-C1

LEVEL 8,9,10,11,18,19,20,21,22,23
30,31,32,33,34,35,42,43,44,
45,46,47

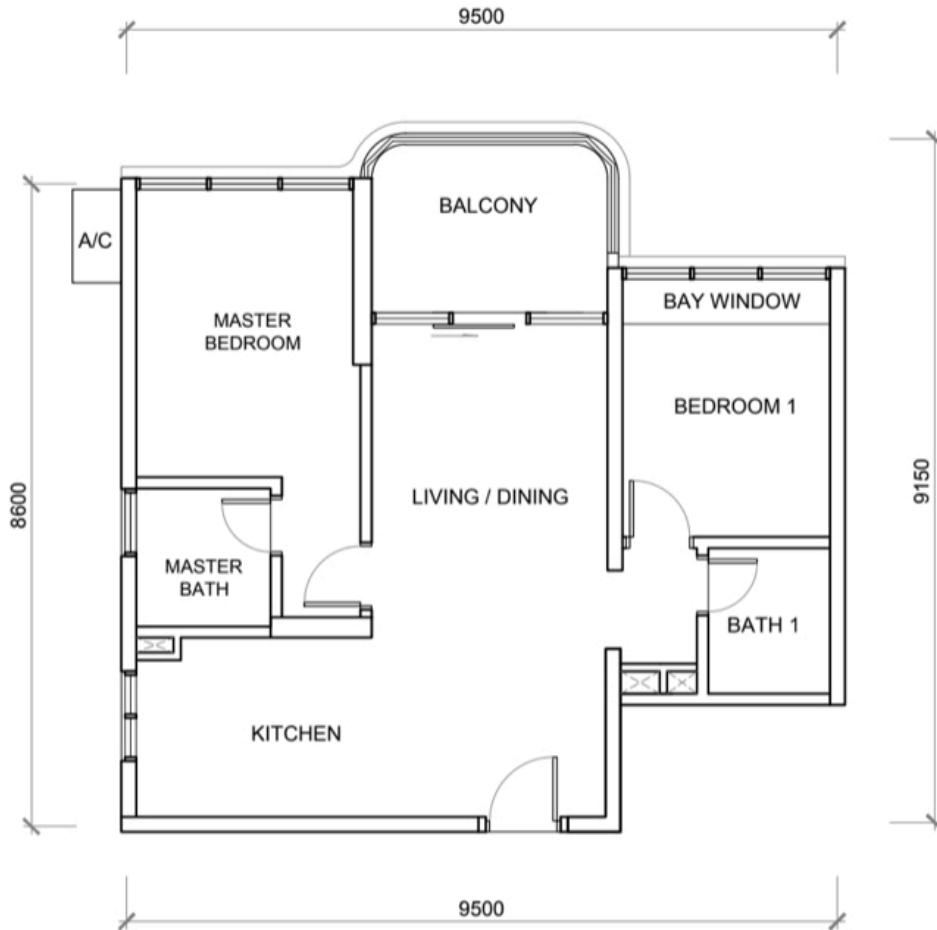
Mawlas

AKIPRAKTIS

ARCHITECT
122, JALAN IPOH, 51200, KUALA LUMPUR
TEL: 03-4042 5964, 4042 9762.

BLOCK 8A / 8B
- TYPE J535 - C1

* ALL DRAWINGS ARE SUBJECTED TO CHANGES AS DIRECTED BY THE APPROPRIATE AUTHORITY OR THE DEVELOPER'S ARCHITECT.



J535-B

LEVEL 8,9,10,11,18,19,20,21,22,23
30,31,32,33,34,35,42,43,44,
45,46,47

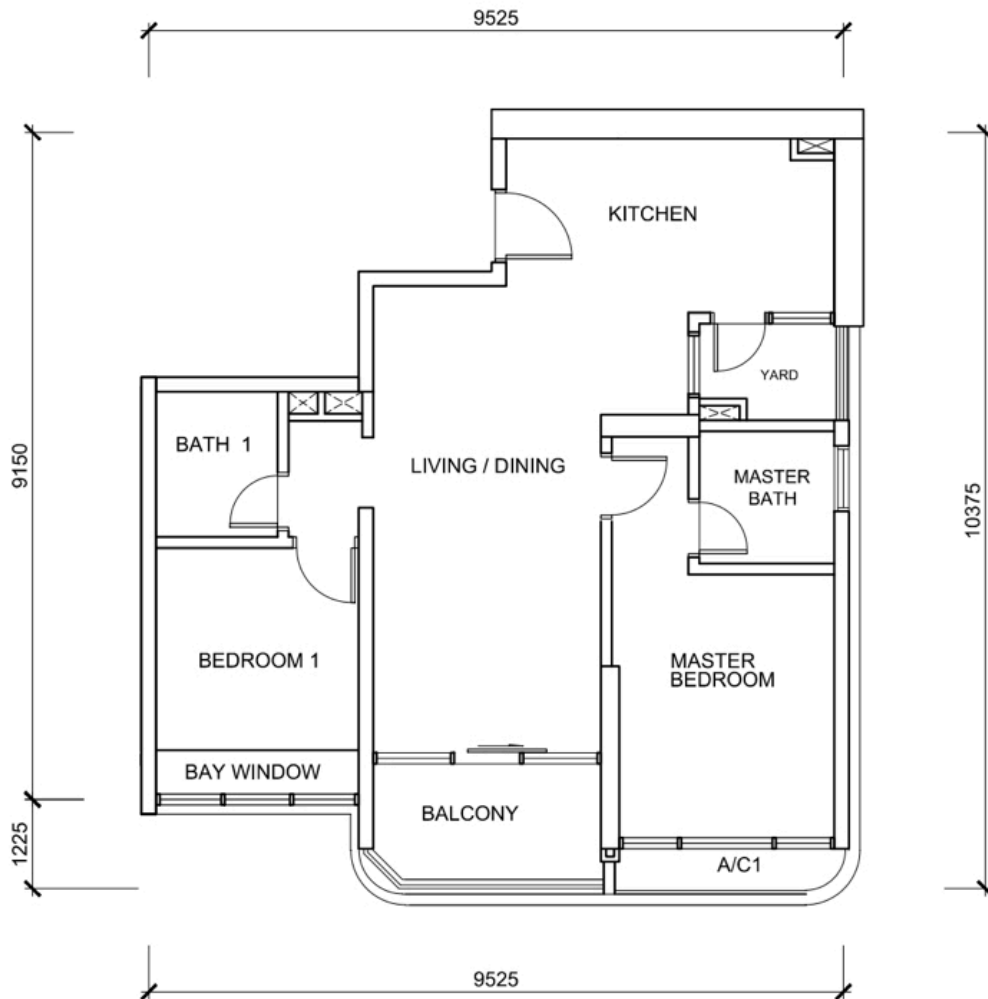
Handwritten signature

AKIPRAKTIS

ARCHITECT
122, JALAN IPOH, 51200, KUALA LUMPUR
TEL: 03-4042 5964, 4042 9762.

BLOCK 8A / 8B
- TYPE B

* ALL DRAWINGS ARE SUBJECTED TO CHANGES AS
DIRECTED BY THE APPROPRIATE AUTHORITY OR
THE DEVELOPER'S ARCHITECT.



J535-C2

LEVEL 12,13,14,15,16,17,24,25,26,
27,28,29,36,37,38,39,40,41,
48

Handwritten signature

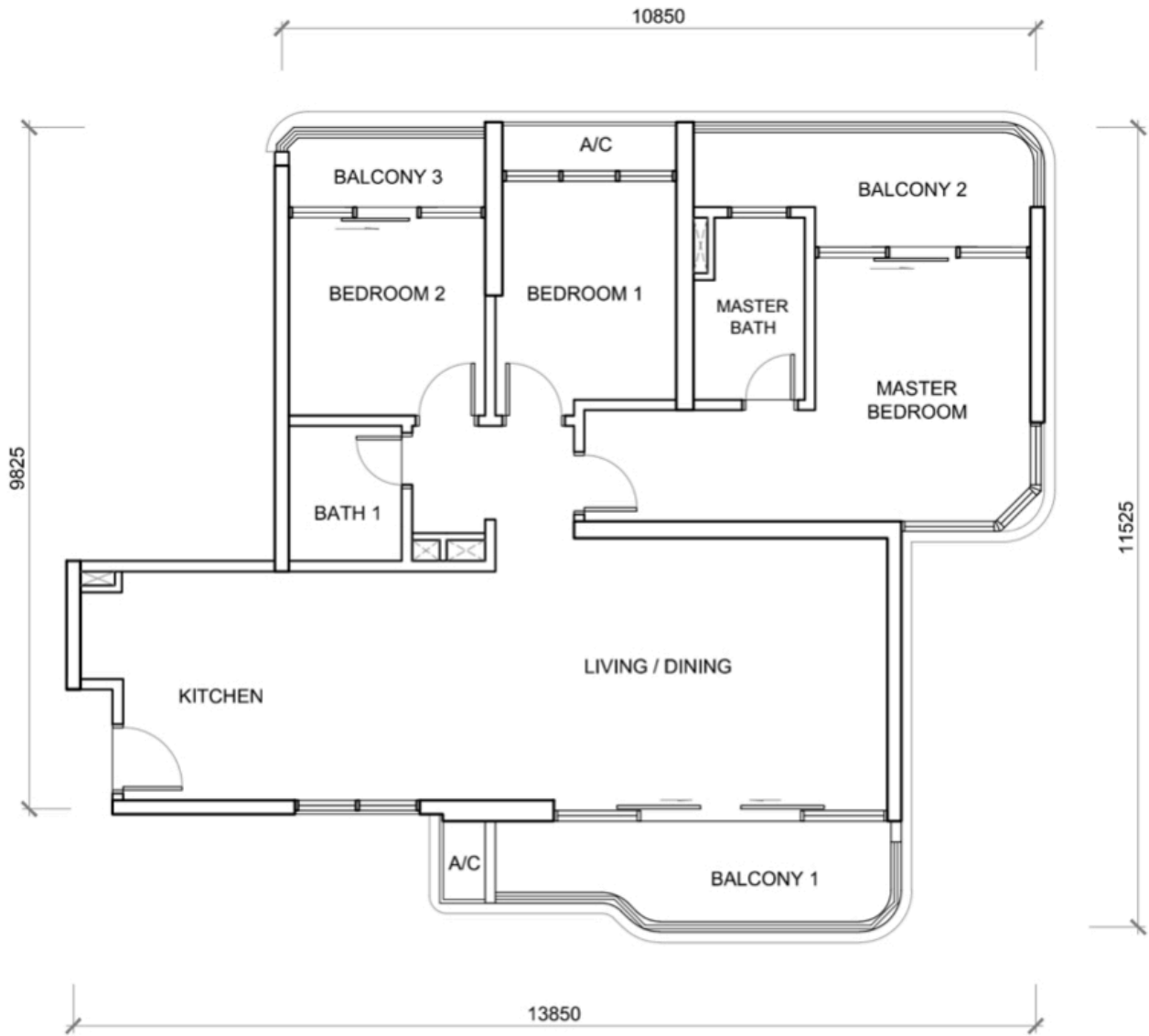
AKIPRAKTIS

ARCHITECT

122, JALAN IPOH, 51200, KUALA LUMPUR
TEL: 03-4042 5964, 4042 9762.

BLOCK 8A / 8B
- TYPE J535 - C2

* ALL DRAWINGS ARE SUBJECTED TO CHANGES AS
DIRECTED BY THE APPROPRIATE AUTHORITY OR
THE DEVELOPER'S ARCHITECT.



J533-F2

LEVEL 9,10,11,12,19,20,21,22,23,
24,31,32,33,34,35,36,43,
44,45,46,47,48,55,

Mawlaty

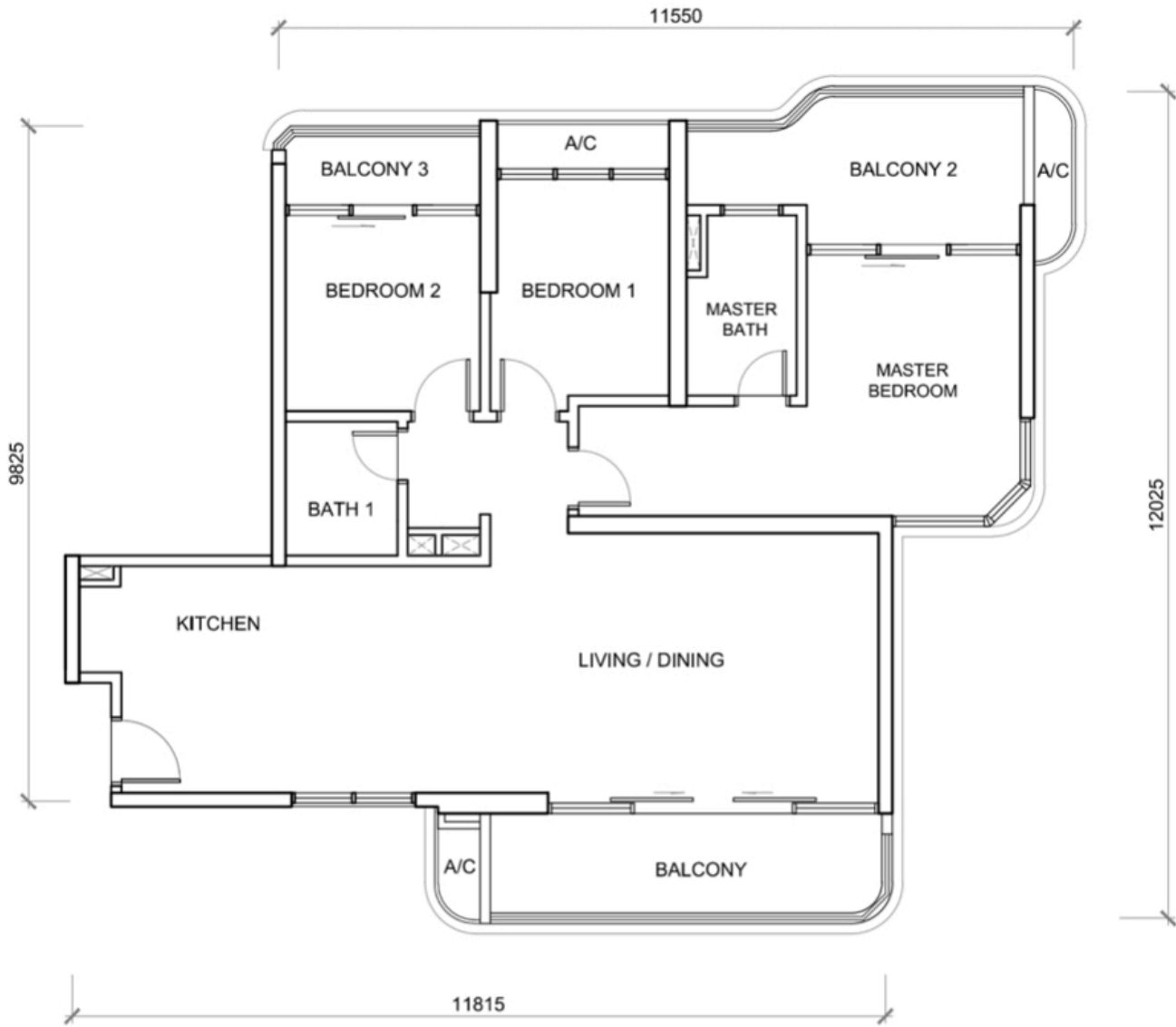
AKIPRAKTIS

ARCHITECT

122, JALAN IPOH, 51200, KUALA LUMPUR
TEL: 03-4042 5964, 4042 9762.

BLOCK 12A / 12B
- TYPE F2

* ALL DRAWINGS ARE SUBJECTED TO CHANGES AS
DIRECTED BY THE APPROPRIATE AUTHORITY OR
THE DEVELOPER'S ARCHITECT.



J533-F3

LEVEL 13,14,15,16,17,18,25,26,27,
28,29,30,37,38,39,40,41,42,
49,50,51,52,53,54,56,

Handwritten signature

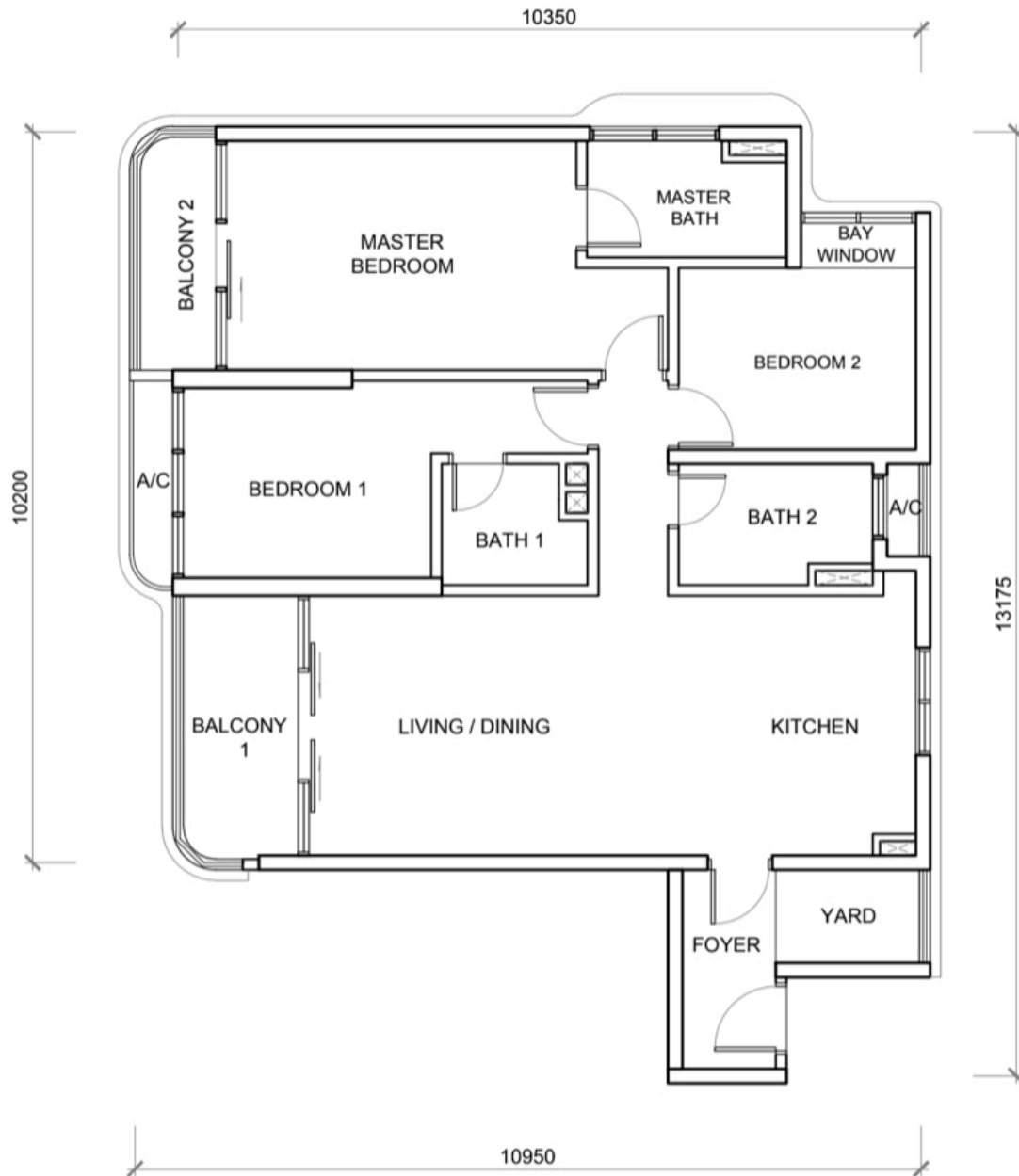
AKIPRAKTIS

ARCHITECT

122, JALAN IPOH, 51200, KUALA LUMPUR
TEL: 03-4042 5964, 4042 9762.

BLOCK 12A / 12B
- TYPE F3

* ALL DRAWINGS ARE SUBJECTED TO CHANGES AS
DIRECTED BY THE APPROPRIATE AUTHORITY OR
THE DEVELOPER'S ARCHITECT.



J533-E1

LEVEL 13,14,15,16,17,18,25,26,27,
28,29,30,37,38,39,40,41,42,
49,50,51,52,53,54,56

Mawlaty wong

AKIPRAKTIS

ARCHITECT

122, JALAN IPOH, 51200, KUALA LUMPUR
TEL: 03-4042 5964, 4042 9762.

BLOCK 12A / 12B
- TYPE E1

* ALL DRAWINGS ARE SUBJECTED TO CHANGES AS
DIRECTED BY THE APPROPRIATE AUTHORITY OR
THE DEVELOPER'S ARCHITECT.



J533-E

LEVEL 9,10,11,12,19,20,21,22,23,
24,31,32,33,34,35,36,43,44,
45,46,47,48,55

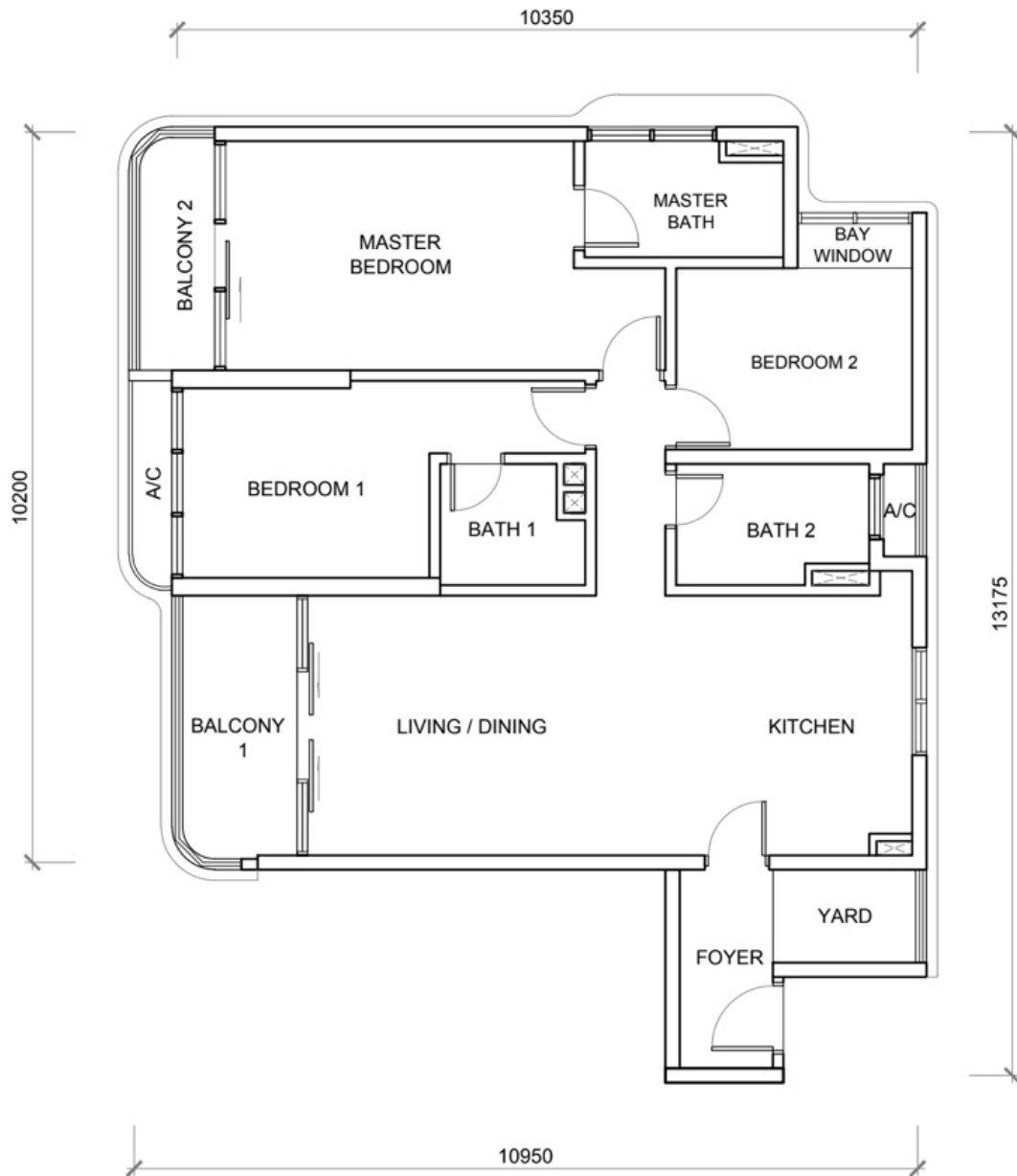
Mawlasong

AKIPRAKTIS

ARCHITECT
122, JALAN IPOH, 51200, KUALA LUMPUR
TEL: 03-4042 5964, 4042 9762.

BLOCK 12A / 12B
- TYPE E

* ALL DRAWINGS ARE SUBJECTED TO CHANGES AS DIRECTED BY THE APPROPRIATE AUTHORITY OR THE DEVELOPER'S ARCHITECT.



J535-E1

LEVEL 12,13,14,15,16,17,24,25,26,
27,28,29,36,37,38,39,40,41,
48

Mawher Wong

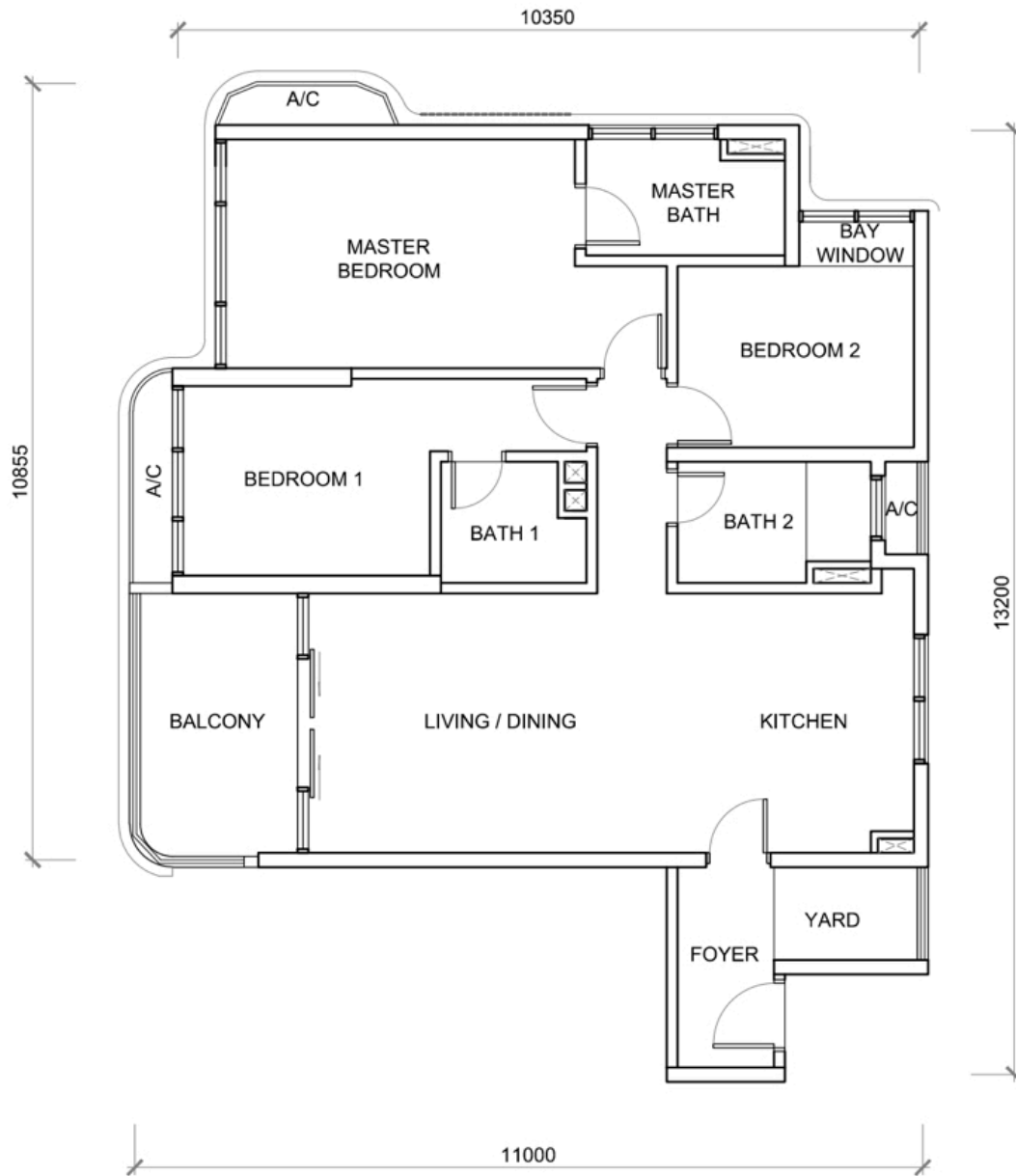
AKIPRAKTIS

ARCHITECT

122, JALAN IPOH, 51200, KUALA LUMPUR
TEL: 03-4042 5964, 4042 9762.

BLOCK 8A / 8B
- TYPE E1

* ALL DRAWINGS ARE SUBJECTED TO CHANGES AS
DIRECTED BY THE APPROPRIATE AUTHORITY OR
THE DEVELOPER'S ARCHITECT.



J535-E

LEVEL 8,9,10,11,18,19,20,21,22,23
30,31,32,33,34,35,42,43,44,
45,46,47

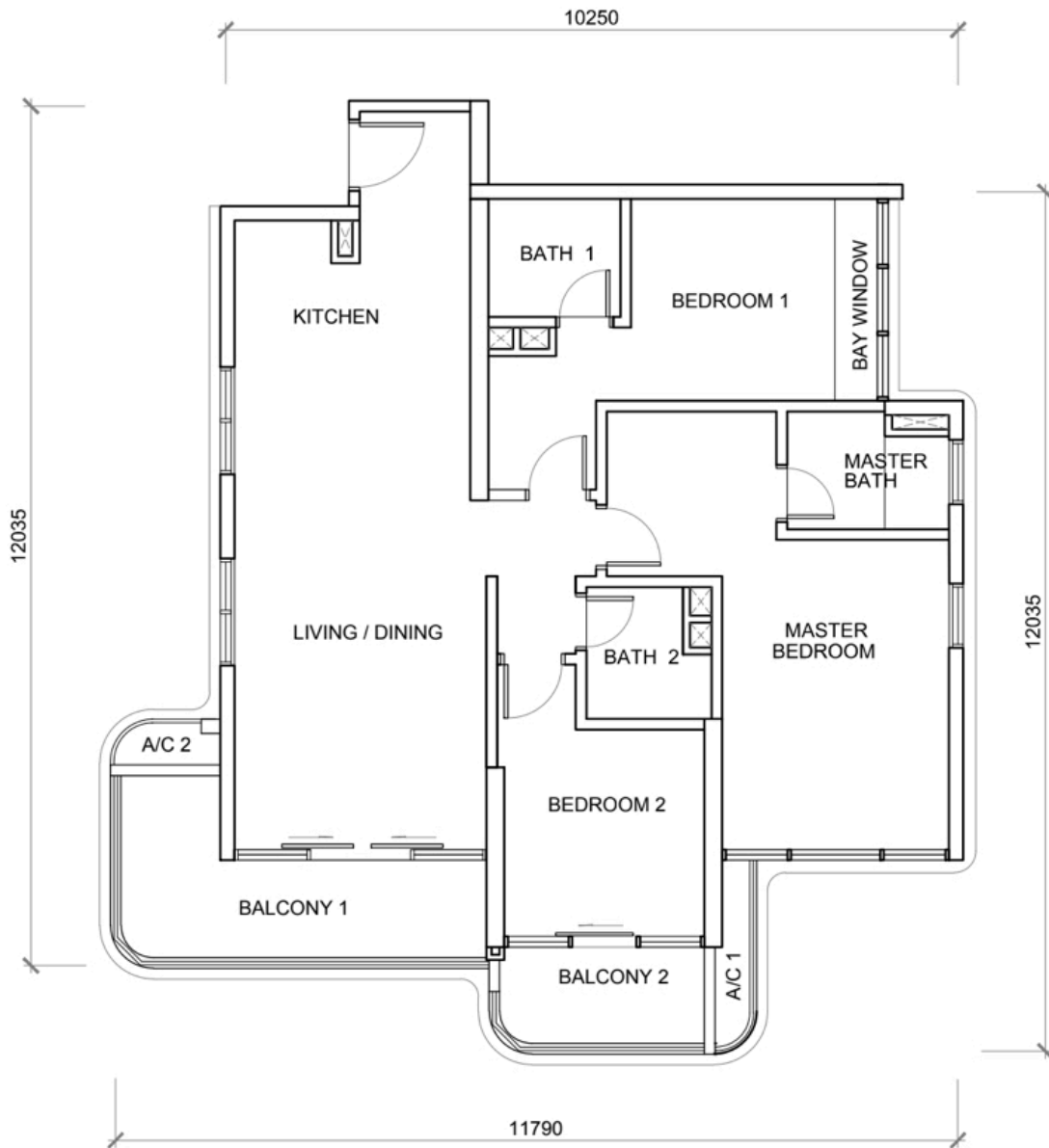
Mawlaty wong

AKIPRAKTIS

ARCHITECT
122, JALAN IPOH, 51200, KUALA LUMPUR
TEL: 03-4042 5964, 4042 9762.

BLOCK 8A / 8B
- TYPE E

* ALL DRAWINGS ARE SUBJECTED TO CHANGES AS DIRECTED BY THE APPROPRIATE AUTHORITY OR THE DEVELOPER'S ARCHITECT.



J535-A1

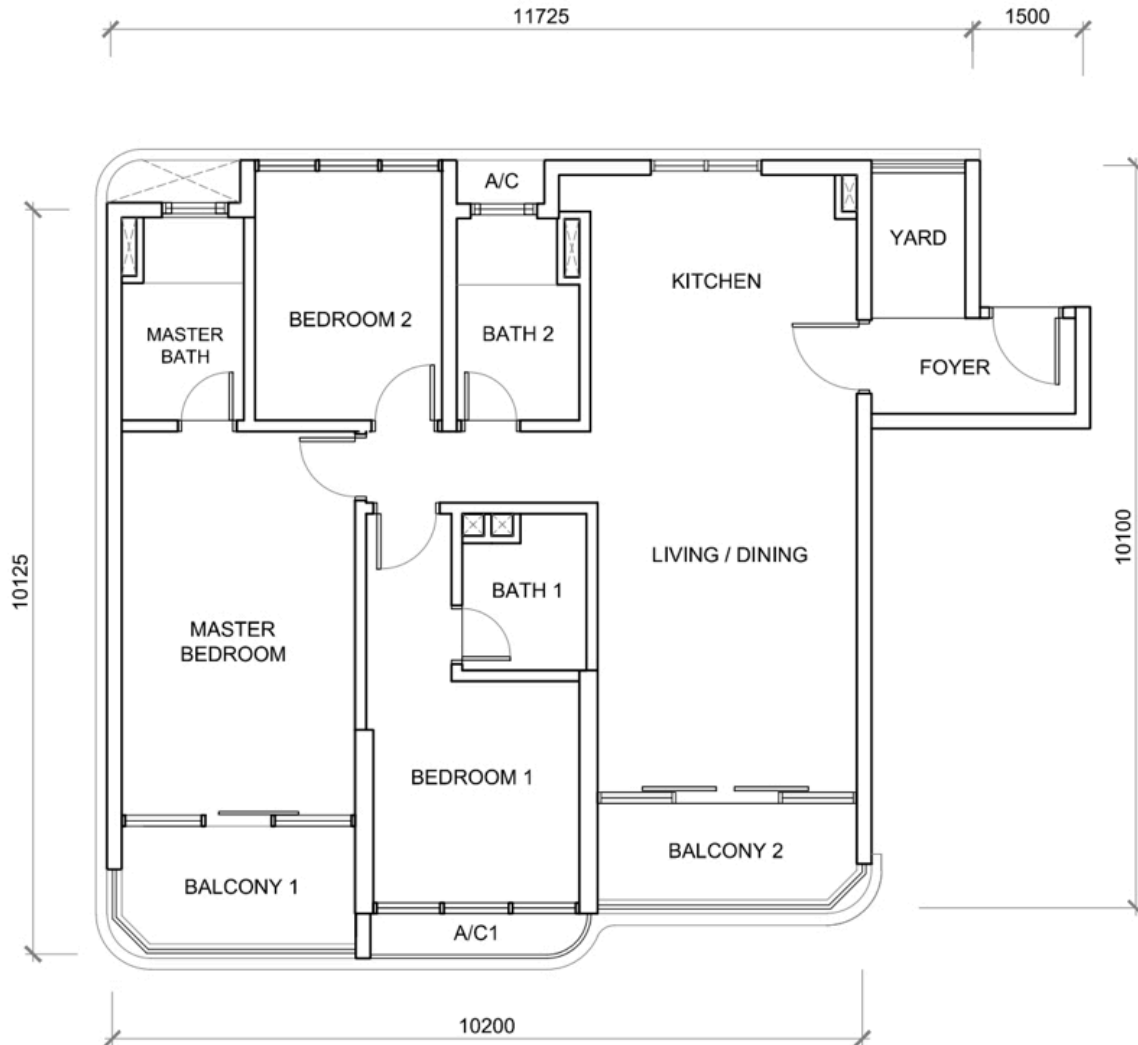
LEVEL 12,13,14,15,16,17,24,25,26,
27,28,29,36,37,38,39,40,41,
48

AKIPRAKTIS

AKIPRAKTIS
ARCHITECT
122, JALAN IPOH, 51200, KUALA LUMPUR
TEL: 03-4042 5964, 4042 9762.

BLOCK 8A / 8B
- TYPE A1

* ALL DRAWINGS ARE SUBJECTED TO CHANGES AS DIRECTED BY THE APPROPRIATE AUTHORITY OR THE DEVELOPER'S ARCHITECT.



J535-D4

LEVEL 12,13,14,15,16,17,24,25,26,
27,28,29,36,37,38,39,40,41,
48

Mawlay Wong

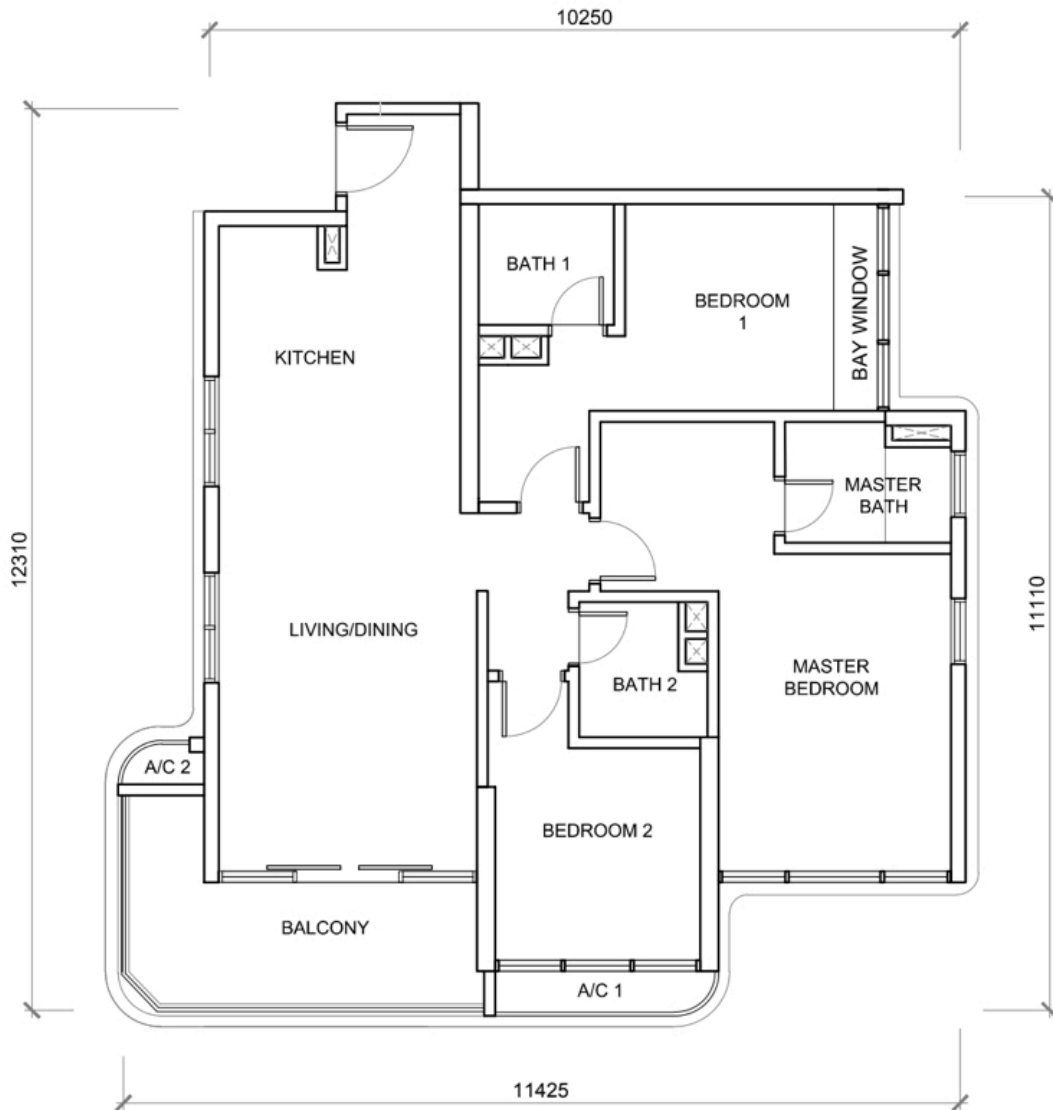
AKIPRAKTIS

ARCHITECT

122, JALAN IPOH, 51200, KUALA LUMPUR
TEL: 03-4042 5964, 4042 9762.

BLOCK 8A / 8B
- TYPE D4

* ALL DRAWINGS ARE SUBJECTED TO CHANGES AS
DIRECTED BY THE APPROPRIATE AUTHORITY OR
THE DEVELOPER'S ARCHITECT.



J535-A

LEVEL 8,9,10,11,18,19,20,21,22,23
30,31,32,33,34,35,42,43,44,
45,46,47

AKIPRAKTIK

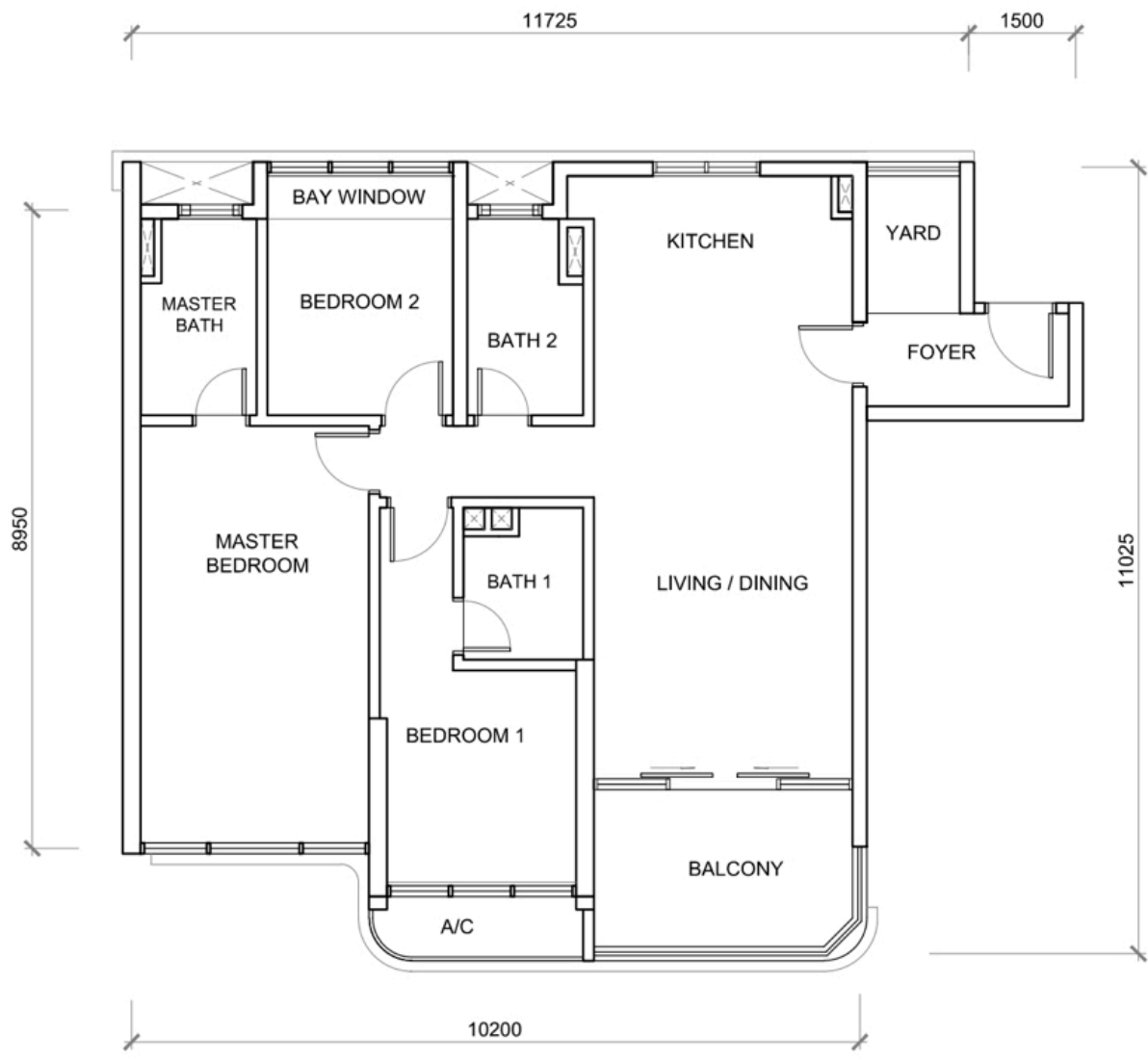
AKIPRAKTIS

ARCHITECT

122, JALAN IPOH, 51200, KUALA LUMPUR
TEL: 03-4042 5964, 4042 9762.

BLOCK 8A / 8B
- TYPE A

* ALL DRAWINGS ARE SUBJECTED TO CHANGES AS
DIRECTED BY THE APPROPRIATE AUTHORITY OR
THE DEVELOPER'S ARCHITECT.



J535-D(J)

LEVEL 8,9,10,11,18,19,20,21,22,23
30,31,32,33,34,35,42,43,44,
45,46,47

Mawlayong

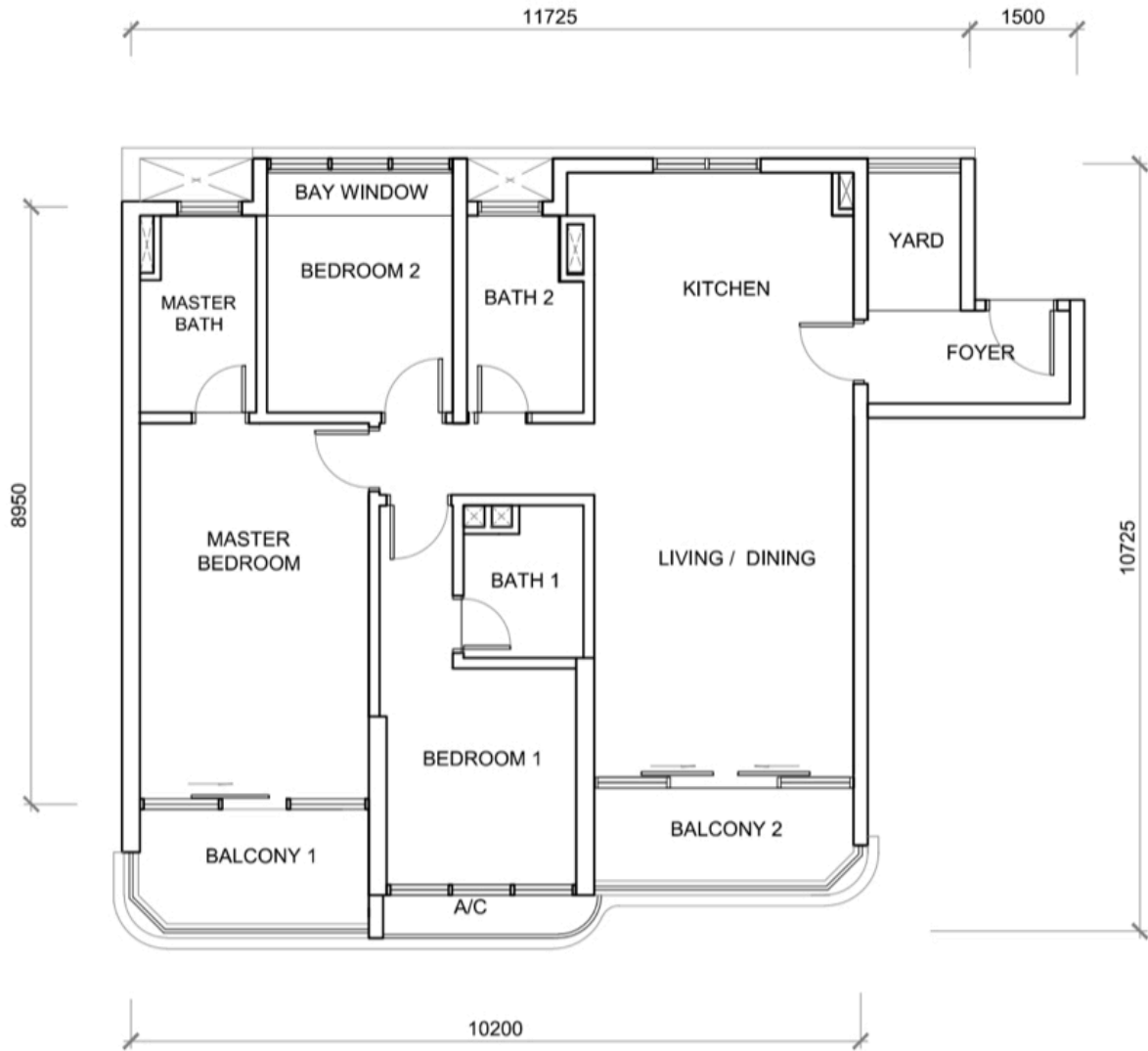
AKIPRAKTIS

ARCHITECT

122, JALAN IPOH, 51200, KUALA LUMPUR
TEL: 03-4042 5964, 4042 9762.

BLOCK 8A / 8B
- TYPE D(J)

* ALL DRAWINGS ARE SUBJECTED TO CHANGES AS
DIRECTED BY THE APPROPRIATE AUTHORITY OR
THE DEVELOPER'S ARCHITECT.



J535-D1(J)

LEVEL 12,13,14,15,16,17,24,25,26,
27,28,29,36,37,38,39,40,41,
48

Handwritten signature

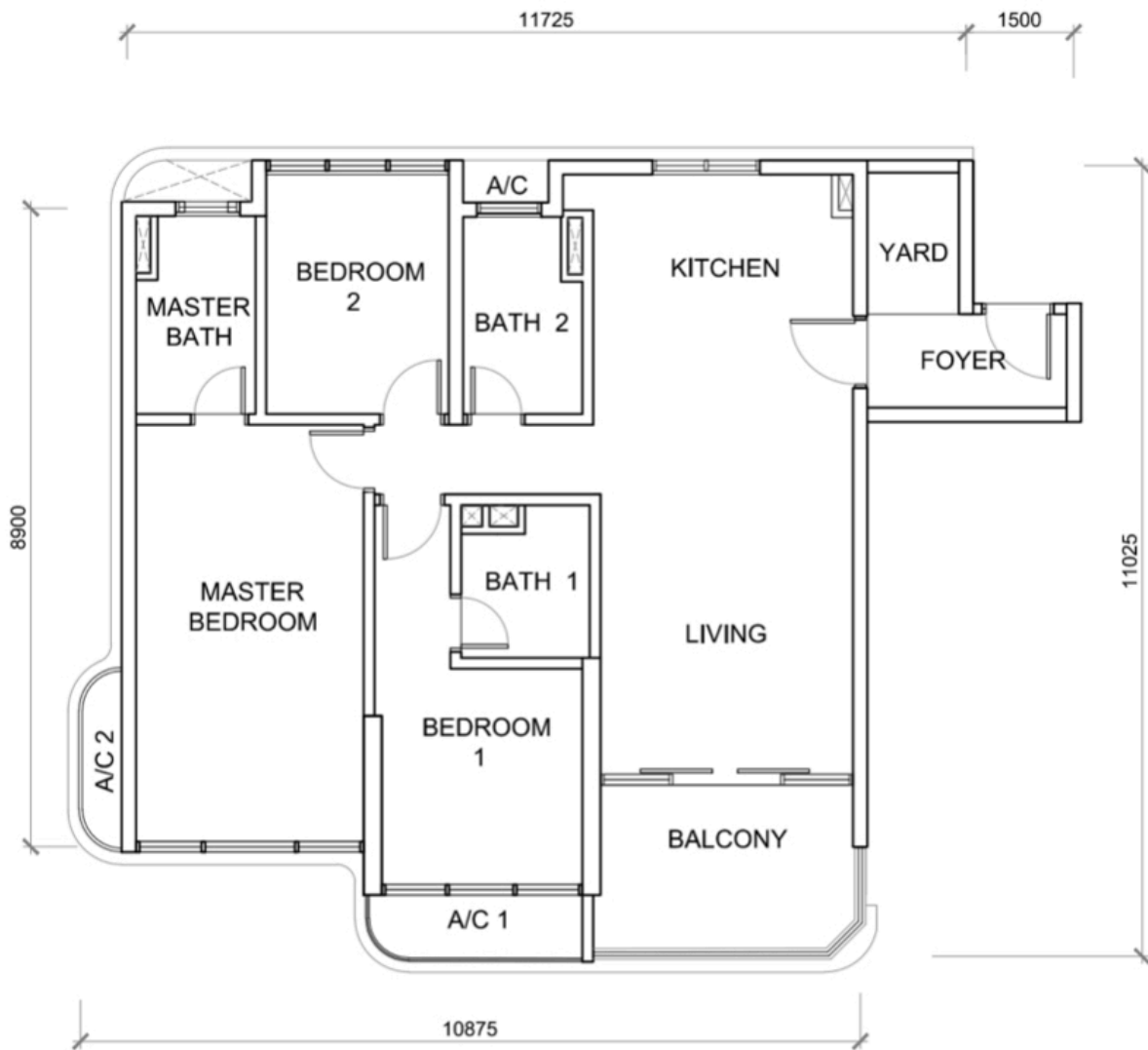
AKIPRAKTIS

ARCHITECT

122, JALAN IPOH, 51200, KUALA LUMPUR
TEL: 03-4042 5964, 4042 9762.

BLOCK 8A / 8B
- TYPE D1(J)

* ALL DRAWINGS ARE SUBJECTED TO CHANGES AS
DIRECTED BY THE APPROPRIATE AUTHORITY OR
THE DEVELOPER'S ARCHITECT.



J535-D3

LEVEL 8,9,10,11,18,19,20,21,22,23
30,31,32,33,34,35,42,43,44,
45,46,47

Mawlaty Wong

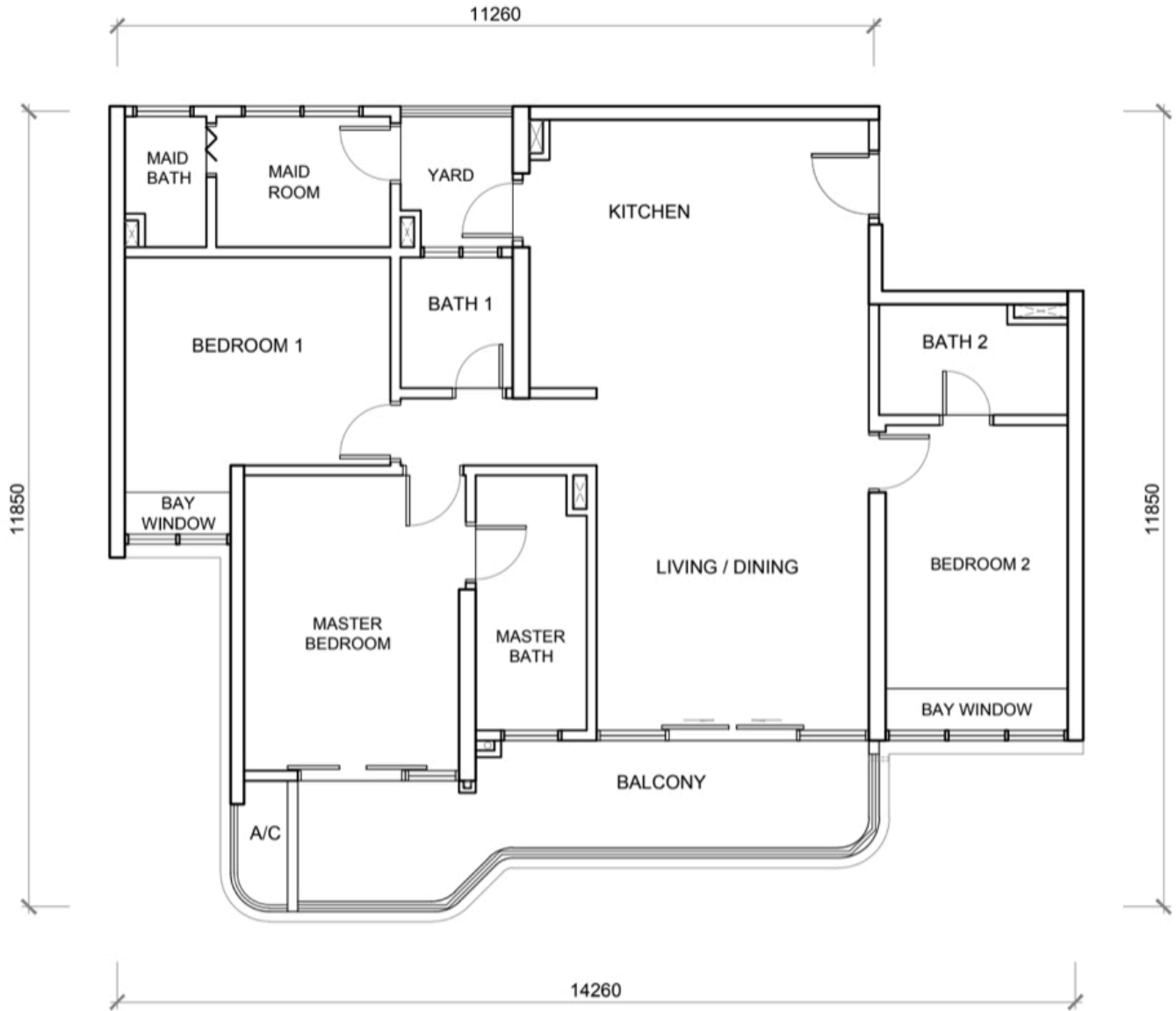
AKIPRAKTIS

ARCHITECT

122, JALAN IPOH, 51200, KUALA LUMPUR
TEL: 03-4042 5964, 4042 9762.

BLOCK 8A / 8B
- TYPE D3

* ALL DRAWINGS ARE SUBJECTED TO CHANGES AS
DIRECTED BY THE APPROPRIATE AUTHORITY OR
THE DEVELOPER'S ARCHITECT.



J533-H3(J)

LEVEL 13,14,15,16,17,18,25,26,27,
28,29,30,37,38,39,40,41,42,
49,50,51,52,53,54

Mawlayong

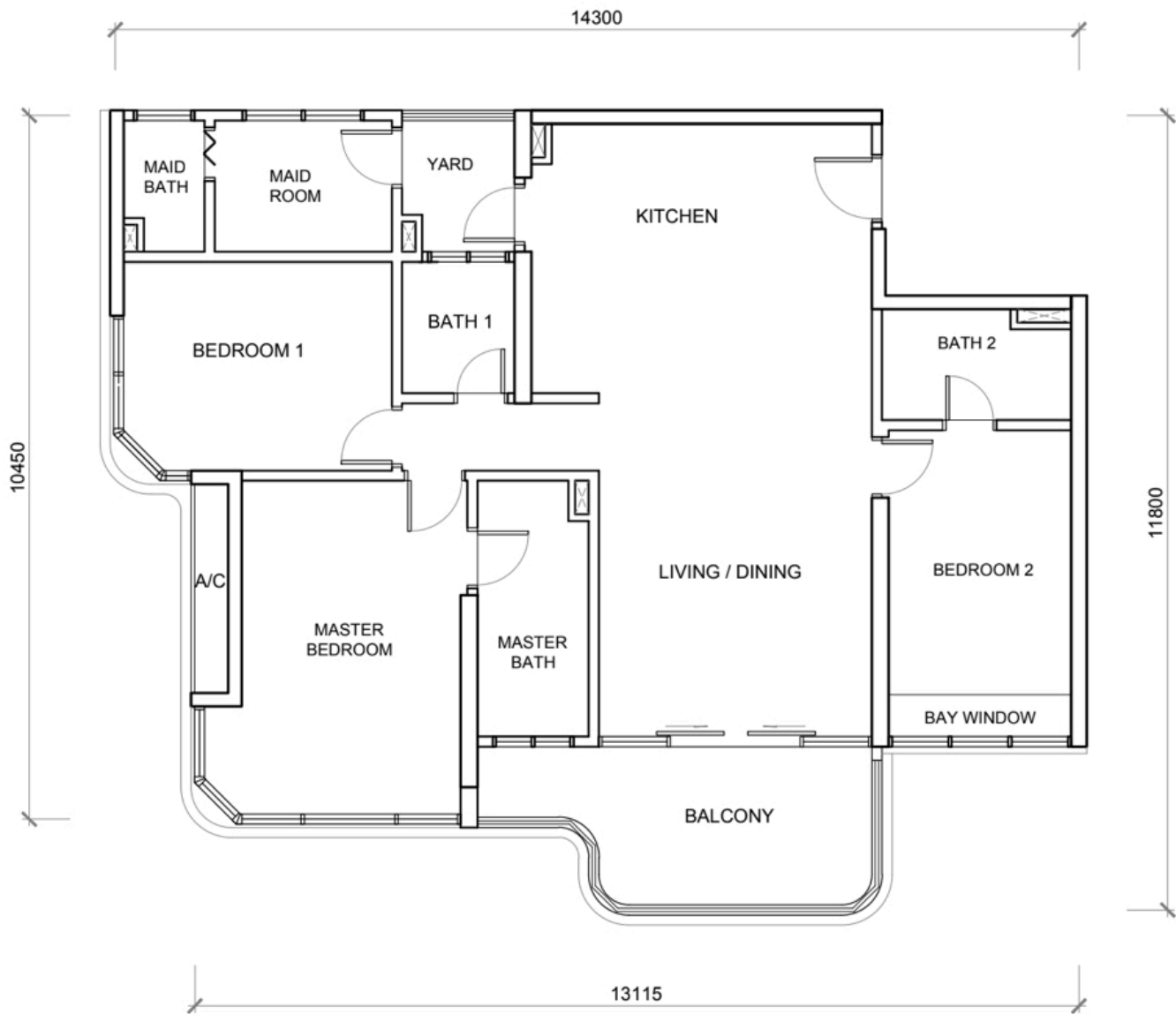
AKIPRAKTIS

ARCHITECT

122, JALAN IPOH, 51200, KUALA LUMPUR
TEL: 03-4042 5964, 4042 9762.

BLOCK 12A / 12B
- TYPE H3 (J)

* ALL DRAWINGS ARE SUBJECTED TO CHANGES AS
DIRECTED BY THE APPROPRIATE AUTHORITY OR
THE DEVELOPER'S ARCHITECT.



J533-H

LEVEL 9,10,11,12,19,20,21,22,23,
24,31,32,33,34,35,36,43,
44,45,46,47,48,55

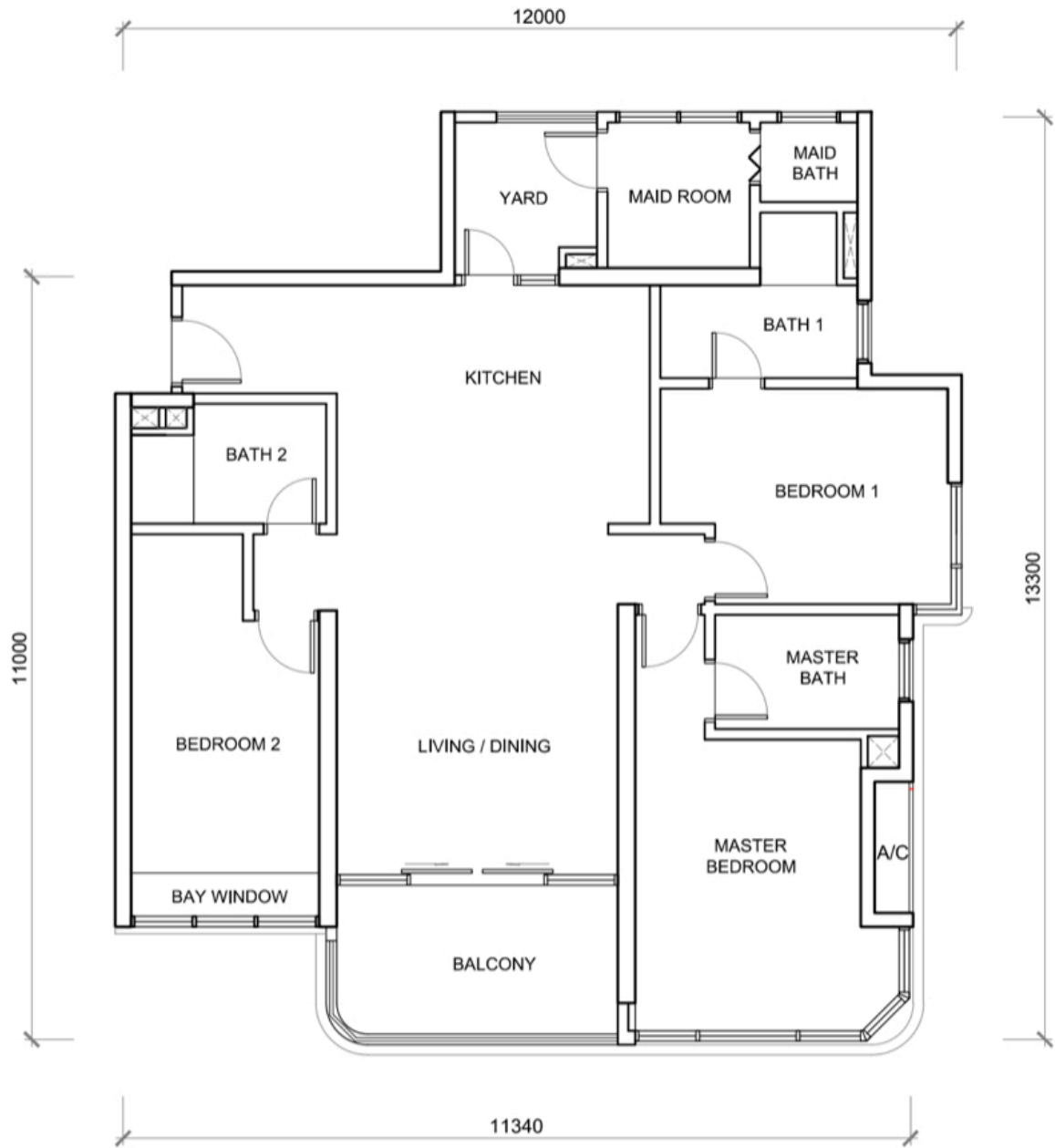
Mawlay Wah

AKIPRAKTIS

ARCHITECT
122, JALAN IPOH, 51200, KUALA LUMPUR
TEL: 03-4042 5964, 4042 9762.

BLOCK 12A / 12B
- TYPE H

* ALL DRAWINGS ARE SUBJECTED TO CHANGES AS
DIRECTED BY THE APPROPRIATE AUTHORITY OR
THE DEVELOPER'S ARCHITECT.



J533-G

LEVEL 9,10,11,12,19,20,21,22,23,
24,31,32,33,34,35,36,43,
44,45,46,47,48,55

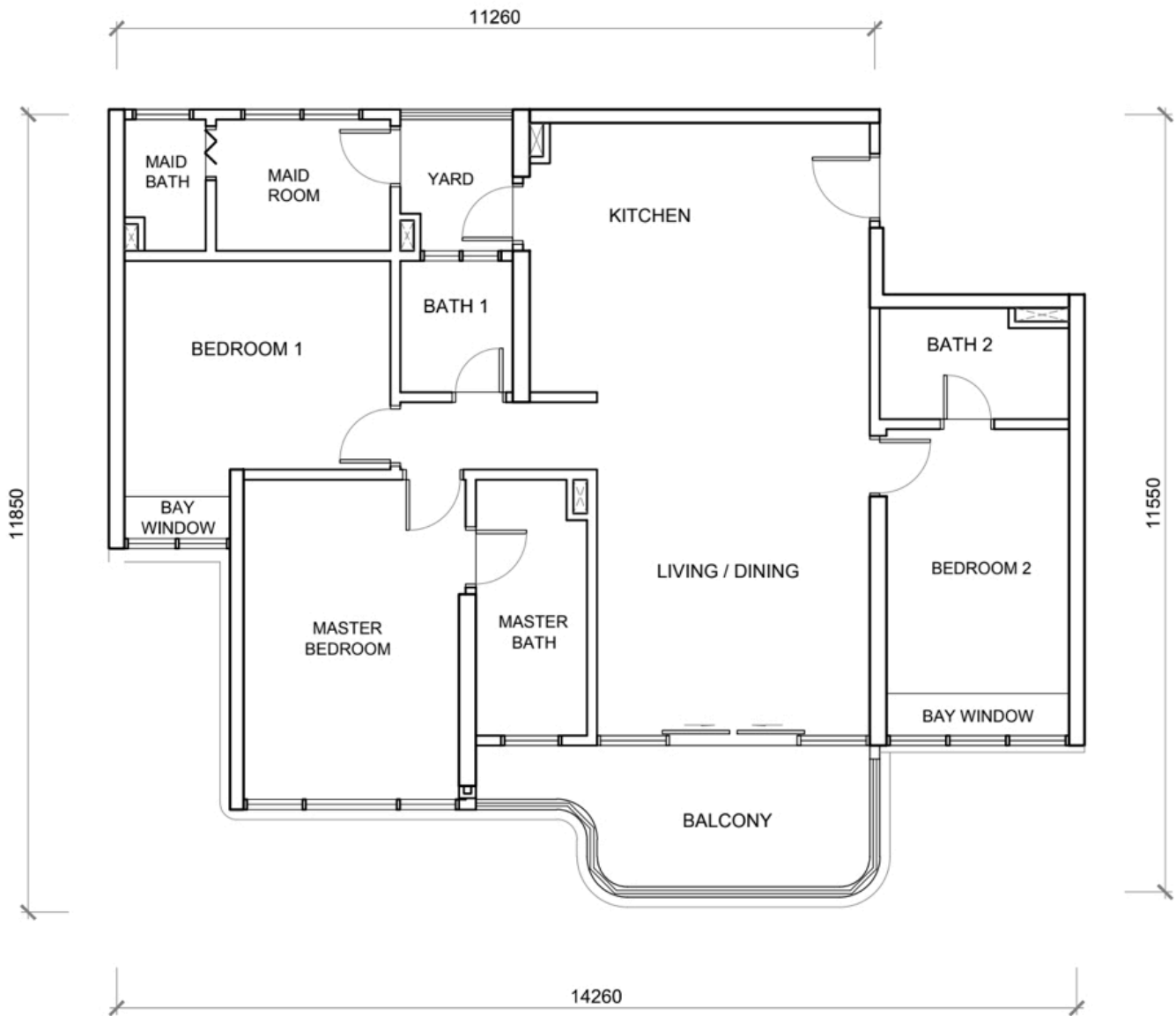
Handwritten signature

AKIPRAKTIS

ARCHITECT
122, JALAN IPOH, 51200, KUALA LUMPUR
TEL: 03-4042 5964, 4042 9762.

BLOCK 12A / 12B
- TYPE G

* ALL DRAWINGS ARE SUBJECTED TO CHANGES AS DIRECTED BY THE APPROPRIATE AUTHORITY OR THE DEVELOPER'S ARCHITECT.



J533-H2(J)

LEVEL 9,10,11,12,19,20,21,22,23,
24,31,32,33,34,35,36,43,
44,45,46,47,48,55

Mawlaty Wong

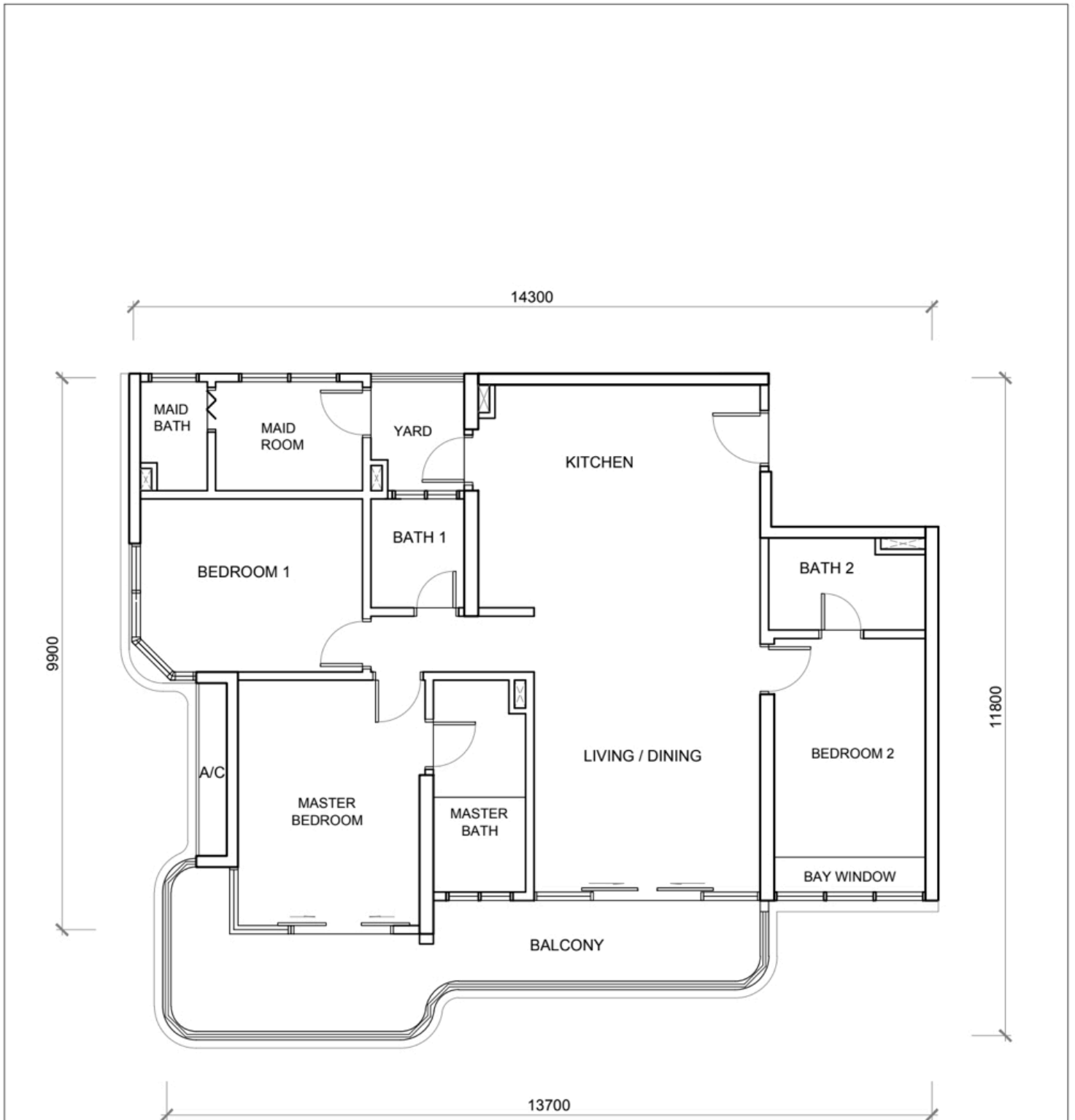
AKIPRAKTIS

ARCHITECT

122, JALAN IPOH, 51200, KUALA LUMPUR
TEL: 03-4042 5964, 4042 9762.

BLOCK 12A / 12B
- TYPE H2 (J)

* ALL DRAWINGS ARE SUBJECTED TO CHANGES AS
DIRECTED BY THE APPROPRIATE AUTHORITY OR
THE DEVELOPER'S ARCHITECT.



J533-H1

LEVEL 13,14,15,16,17,18,25,26,27,
28,29,30,37,38,39,40,41,42,
49,50,51,52,53,54

Krawley & Wong

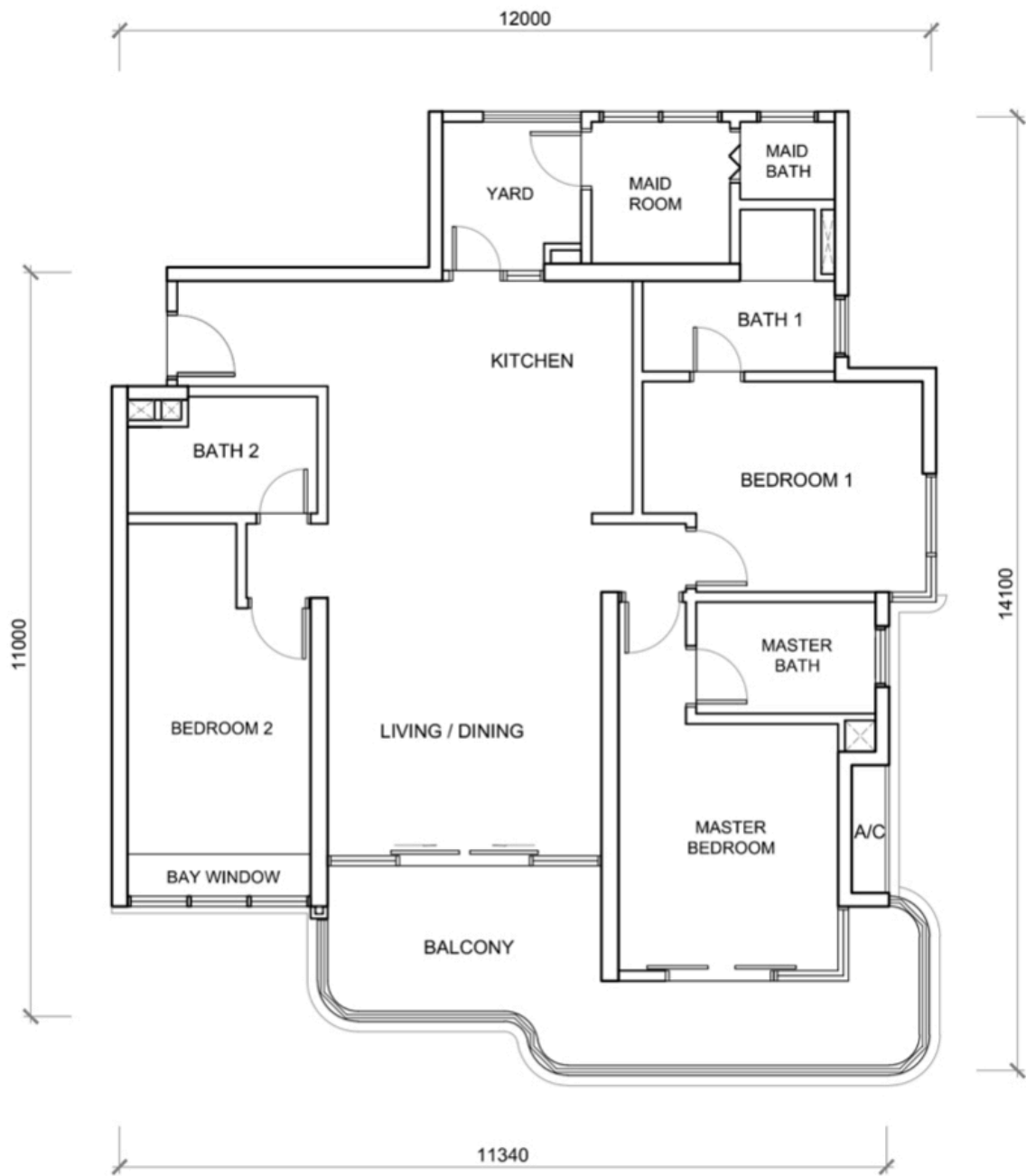
AKIPRAKTIS

ARCHITECT

122, JALAN IPOH, 51200, KUALA LUMPUR
TEL: 03-4042 5964, 4042 9762.

BLOCK 12A / 12B
- TYPE H1

* ALL DRAWINGS ARE SUBJECTED TO CHANGES AS
DIRECTED BY THE APPROPRIATE AUTHORITY OR
THE DEVELOPER'S ARCHITECT.



J533-G1

LEVEL 13,14,15,16,17,18,25,26,27,
28,29,30,37,38,39,40,41,42,
49,50,51,52,53,54

Mawlaty wong

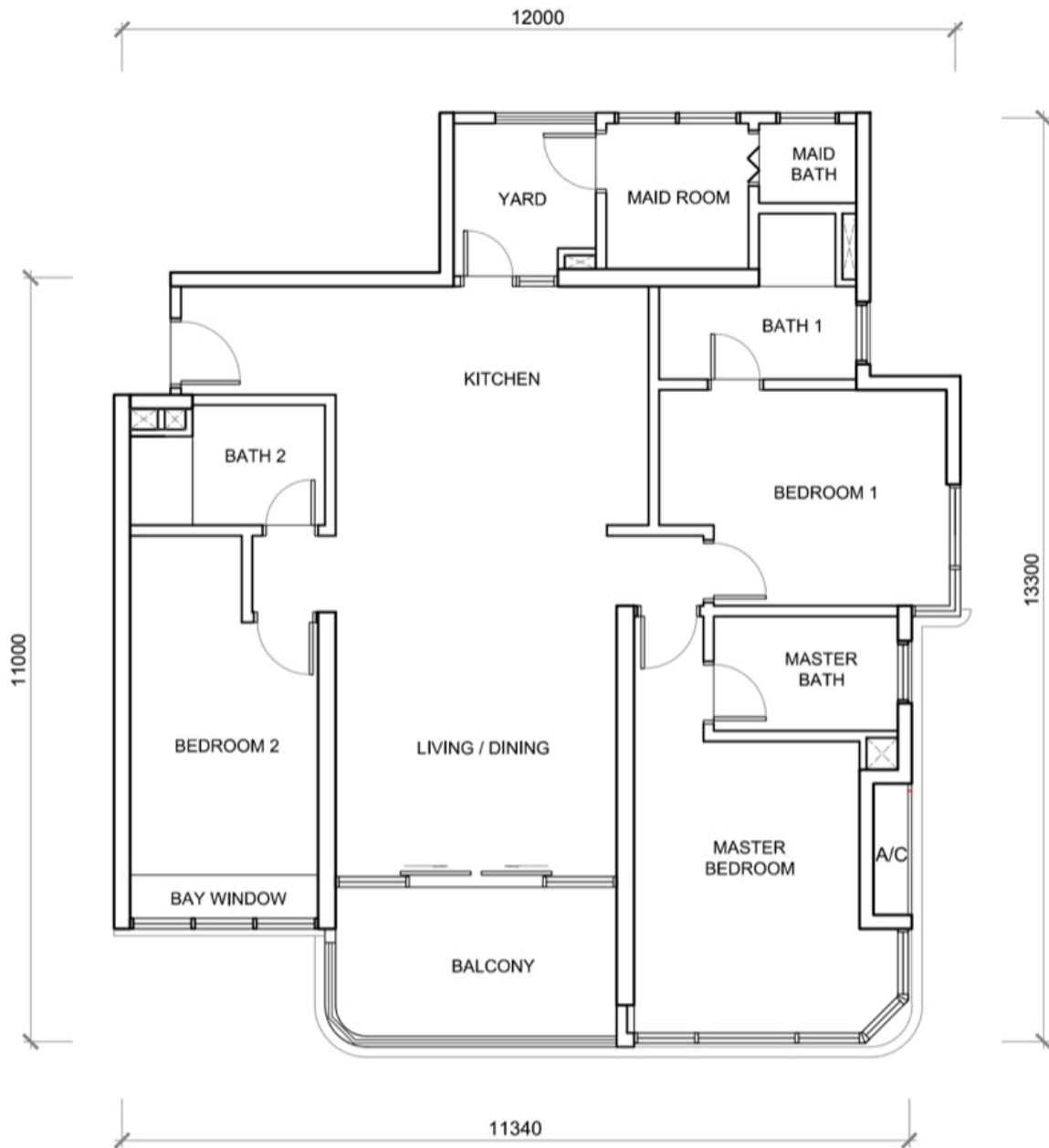
AKIPRAKTIS

ARCHITECT

122, JALAN IPOH, 51200, KUALA LUMPUR
TEL: 03-4042 5964, 4042 9762.

BLOCK 12A / 12B
- TYPE G1

* ALL DRAWINGS ARE SUBJECTED TO CHANGES AS
DIRECTED BY THE APPROPRIATE AUTHORITY OR
THE DEVELOPER'S ARCHITECT.



J533-G

LEVEL 9,10,11,12,19,20,21,22,23,
24,31,32,33,34,35,36,43,
44,45,46,47,48,55

Mawlayong

AKIPRAKTIS

ARCHITECT
122, JALAN IPOH, 51200, KUALA LUMPUR
TEL: 03-4042 5964, 4042 9762.

BLOCK 12A / 12B
- TYPE G

* ALL DRAWINGS ARE SUBJECTED TO CHANGES AS
DIRECTED BY THE APPROPRIATE AUTHORITY OR
THE DEVELOPER'S ARCHITECT.